

# FAXPHONE B640

## BUBBLE JET FACSIMILE

# PARTS

# CATALOG

REVISION 0

[ FAXPHONE B640      H12-0992    120V    USA/CND ]

**Canon**

APR. 1997

**HY8-39AD-000**

COPYRIGHT © 1997 CANON INC.    CANON FAXPHONE B640 APR. 1997 PRINTED IN JAPAN (IMPRIME AU JAPON)

# FAXPHONE B640

## BUBBLE JET FACSIMILE

# PARTS

# CATALOG

**Canon**

### Application

This manual has been issued by Canon Inc. for qualified person to learn technical theory, installation, maintenance, and repair of products. This manual covers all localities where the products are sold. For this reason, there may be information in this manual that does not apply to your locality.

### Corrections

This manual could include technical inaccuracies or typographical errors due to improvements or changes in the products. When changes occur in applicable products or in the content of this manual, Canon will release technical information as the need arises. In the event of major changes in the contents of this manual over a long or short period. Canon will issue a new editions of this manual.

The following paragraph does not apply to any countries where such provisions are inconsistent with local law.

### Trademarks

The product names and company names described in this manual are the registered trademarks of the individual companies.

### Copyright

This manual is copyrighted with all rights reserved. Under the copyright laws, this manual may not be copied, reproduced or translated into another language, in whole or in part, without the written consent of Canon Inc.

Copyright © 1997 by Canon Inc.  
Office Imaging Products Technical Support Dept. 2  
CANON INC.  
5-1 Hakusan 7-Chome, Toride-city, Ibaraki 302, Japan

### DTP Systems

This manual was produced on Apple® Macintosh® personal computer and Canon SUPER LASER SHOT B406 PS laser beam printer.

Parts layout illustrations were created using Aldus® FreeHand 3.1J.

Documents and page layouts were created using QuarkXpress® 3.1J.

Parts lists were created using Helix Technology® Helix Express® and converted to PICT format by Solutions, Inc.® Super GLUE II®.

# I. CONTENTS

1. ILLUSTRATION INDEX
2. PARTS LAYOUT & PARTS LIST
3. TOOL
4. LUBRICATIONS
5. GUIDE TO REPLACEMENT
6. NUMERICAL INDEX

# II. ABOUT THIS MANUAL

## 1. ILLUSTRATION INDEX

For illustration index, the parts layout illustrations in this parts catalog are listed in abbreviated form in order of illustration number to identify the pages they appear on. To find an illustration of a part, see the ILLUSTRATION INDEX.

## 2. PARTS LAYOUT & PARTS LIST

### Parts layout illustration

#### a) Parts search

Find a part from the parts layout illustration and find its key number from the parts list to identify the part number and name.

Further, screws, nuts, washers, grip rings, pins and spacers are mentioned in the parts list.

**Note:** If parts have the same or similar shape but different specifications, their key number is assigned to several part numbers and names in the parts list.

#### b) Parts replacement procedure

The parts layout illustrations are arranged according to the disassembly procedure of the product.

When a unit in the illustration can be disassemble further, a reference illustration page of the disassembly will be included.

Parts where grease is to be applied are displayed as "Lubrication". When replacing parts, or if grease has accidentally been wiped off, refer to "4". (LUBRICATIONS), and reapply the grease.

The parts require carefully work are marked "See page 5-x". So refer to the corresponded page "5". (GUIDE TO REPLACEMENT).

The letters (A), (B) etc. in the illustration indicate the connection locations of cables and screws.

### Parts list

#### a) FIGURE & KEY No.

The FIGURE & KEY No. column corresponds to the key numbers assigned to the parts in the parts layout illustration.

It also corresponds to the part locations printed on the PC board.

#### b) PART NUMBER

The PART NUMBER column gives the part numbers corresponding to the key numbers. To order a part, indicate the part number clearly.

**Note:** Parts marked NPN are not service parts.

#### c) RANK

The service parts with N in the RANK column are order parts.

#### d) QTY

The QTY column gives the number of parts in the corresponding components layout illustration.

#### e) DESCRIPTION

The DESCRIPTION column gives the part names in English.

To order a part, indicate the part name, too.

## 3. TOOL

This is a list of tools used for servicing products.

## 4. LUBRICATIONS

Where grease is to be applied in order to allow moving parts to work smoothly, and to increase conductivity, the type and amount of grease to be used will be mentioned.

## 5. GUIDE TO REPLACEMENT

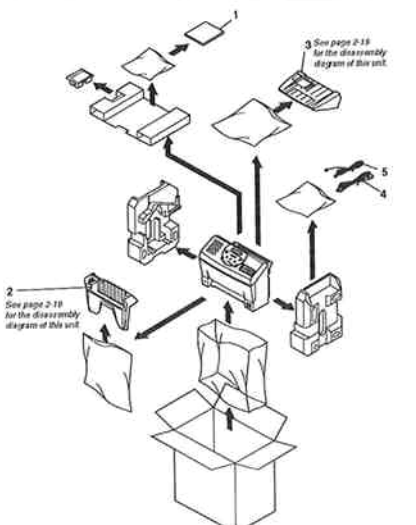
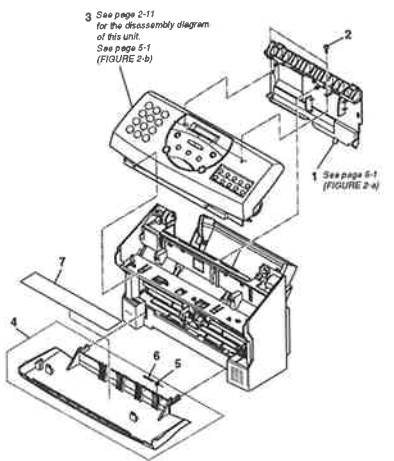
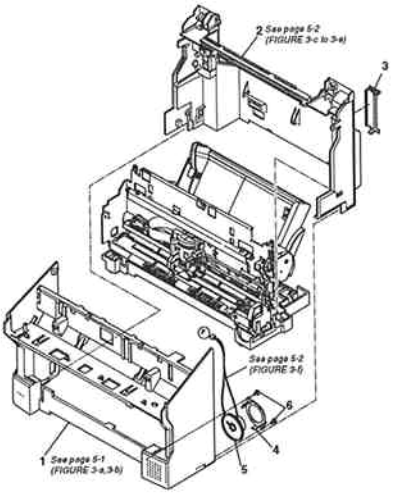
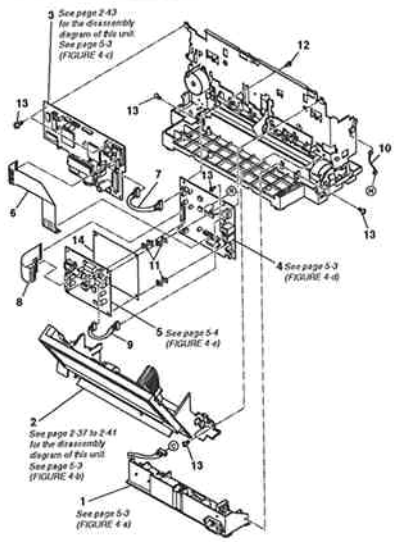
Explains the special cares and cautions for the parts replacement.

## 6. NUMERICAL INDEX

All the parts listed in this parts catalog are arranged in order of part number. You can identify part locations and names from the NUMERICAL INDEX.

**This page intentionally left blank**

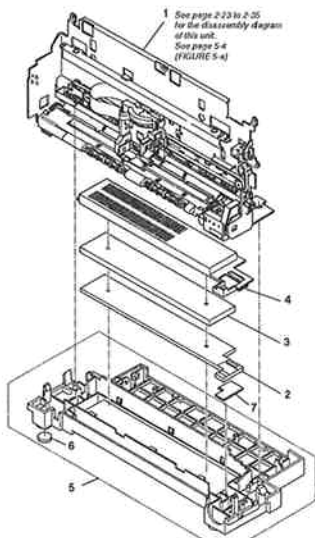
# 1. ILLUSTRATION INDEX

<p><b>FIGURE 1</b> FAXPHONE B640 PACKAGE CONTENTS</p>	<p>See Page 2 - 1</p>	<p><b>FIGURE 2</b> SCANNER UNIT &amp; COVERS</p>	<p>See Page 2 - 3</p>
 <p>2 See page 2-10 for the disassembly diagram of this unit</p> <p>3 See page 2-10 for the disassembly diagram of this unit</p>		 <p>3 See page 2-11 for the disassembly diagram of this unit. See page 5-1 (FIGURE 2-b)</p> <p>1 See page 5-1 (FIGURE 2-a)</p>	
<p><b>FIGURE 3</b> MAIN COVER &amp; SPEAKER</p>	<p>See Page 2 - 5</p>	<p><b>FIGURE 4</b> POWER SUPPLY UNIT &amp; ASF &amp; SCNT BOARD ASS'Y &amp; NCU BOARD ASS'Y &amp; INTCONT BOARD ASS'Y</p>	<p>See Page 2 - 7</p>
 <p>2 See page 5-2 (FIGURE 3-c to 3-e)</p> <p>3 See page 5-2 (FIGURE 3-f)</p> <p>1 See page 5-1 (FIGURE 3-a,3-b)</p>		 <p>3 See page 2-43 for the disassembly diagram of this unit. See page 5-3 (FIGURE 4-c)</p> <p>4 See page 5-3 (FIGURE 4-d)</p> <p>5 See page 5-4 (FIGURE 4-e)</p> <p>2 See page 2-37 to 2-41 for the disassembly diagram of this unit. See page 5-3 (FIGURE 4-b)</p> <p>1 See page 5-3 (FIGURE 4-a)</p>	

**FIGURE 5**

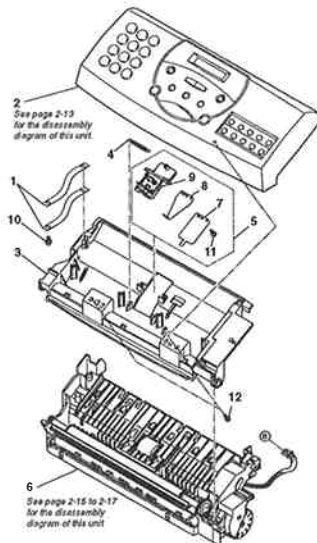
**PRINTER ASS'Y & INK  
ABSORBER & LOWER  
COVER UNIT**

See Page  
2 - 9

**FIGURE 6**

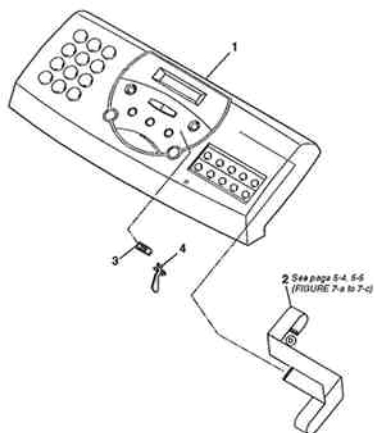
**OPERATION PANEL UNIT & SEPARATION GUIDE & SCANNER BASE UNIT**

See Page  
2 - 11

**FIGURE 7**

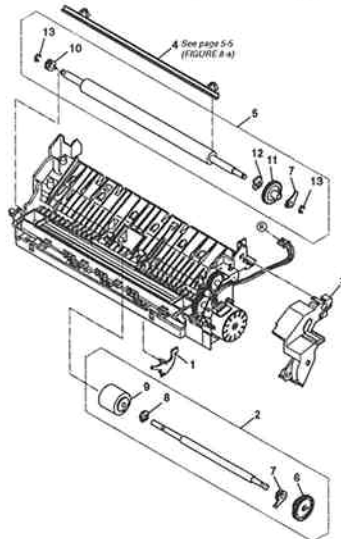
**OPERATION PANEL  
ASS'Y**

See Page  
2 - 13

**FIGURE 8**

**SEPARATION ROLLER  
ASS'Y & DOCUMENT  
FEED ROLLER ASS'Y**

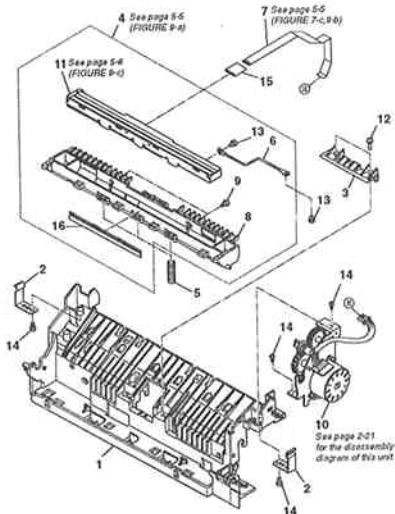
See Page  
2 - 15





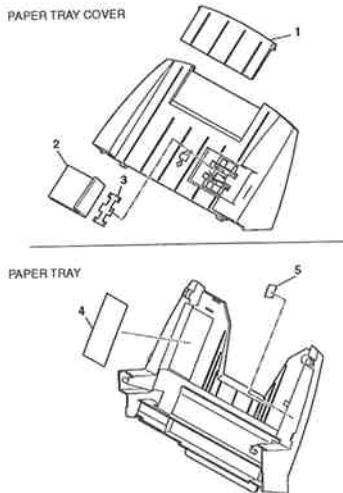
**FIGURE 9** CONTACT SENSOR ASS'Y & SCANNER DRIVE ASS'Y

See Page 2 - 17



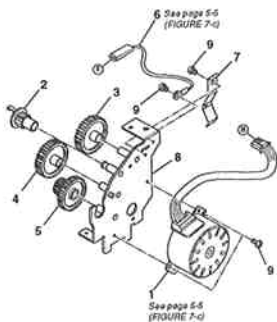
**FIGURE 10** PAPER TRAY COVER & PAPER TRAY

See Page 2 - 19



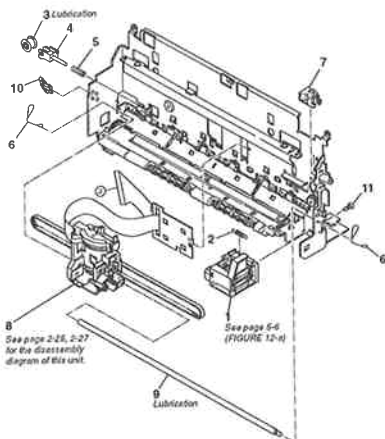
**FIGURE 11** DOCUMENT FEED MOTOR & SCANNER DRIVE GEARS

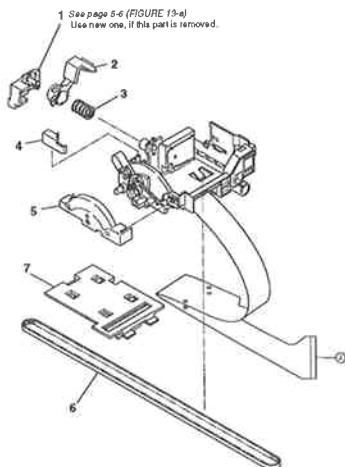
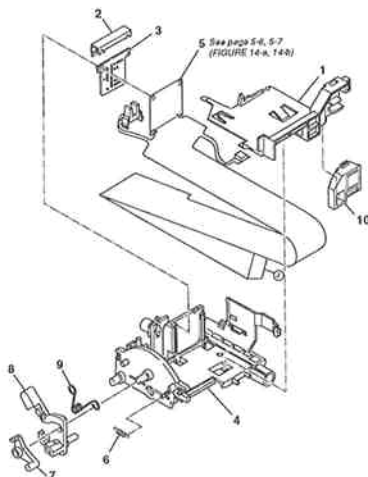
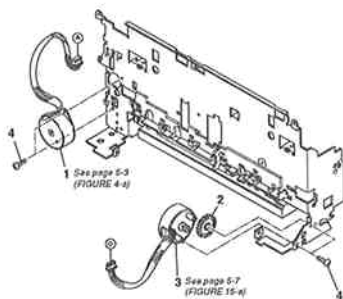
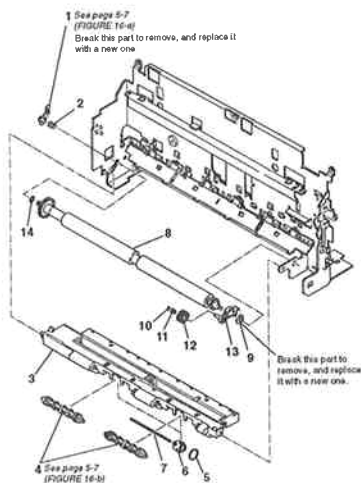
See Page 2 - 21



**FIGURE 12** PURGE UNIT & CARRIAGE SECTION (1)

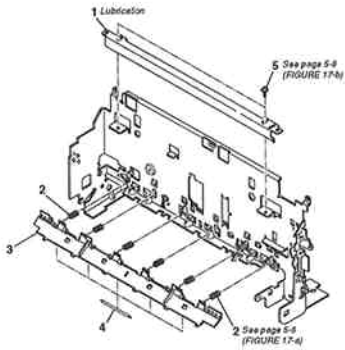
See Page 2 - 23



**FIGURE 13** CARRIAGE SECTION (2)See Page  
2 - 25**FIGURE 14** CARRIAGE SECTION (3)See Page  
2 - 27**FIGURE 15** CARRIAGE MOTOR &  
PAPER FEED MOTORSee Page  
2 - 29**FIGURE 16** PAPER FEED SECTION (1)See Page  
2 - 31

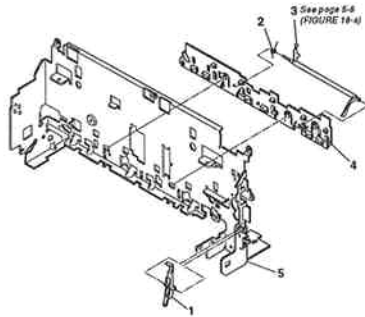
**FIGURE 17** PAPER FEED SECTION (2) & CARRIAGE GUIDE FRAME

See Page 2 - 33



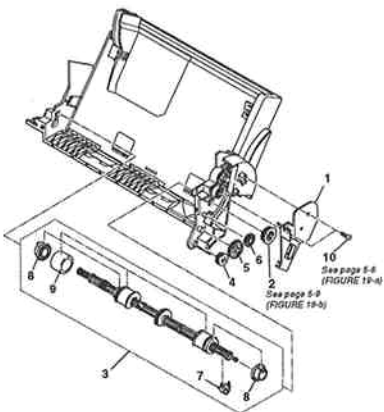
**FIGURE 18** PRINTER FRAME

See Page 2 - 35



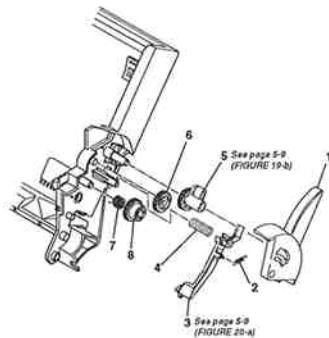
**FIGURE 19** AUTO SHEET FEEDER (1)

See Page 2 - 37



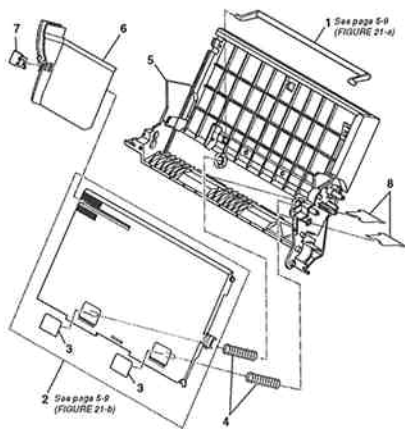
**FIGURE 20** AUTO SHEET FEEDER (2)

See Page 2 - 39



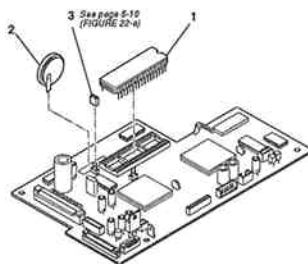
**FIGURE 21** AUTO SHEET FEEDER (3)

See Page  
2 - 41



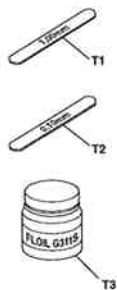
**FIGURE 22** SCNT BOARD ASS'Y

See Page  
2 - 43



**FIGURE 23** TOOLS

See Page  
3 - 1



## 2. PARTS LAYOUT & PARTS LIST

FIGURE 1 FAXPHONE B640 PACKAGE CONTENTS

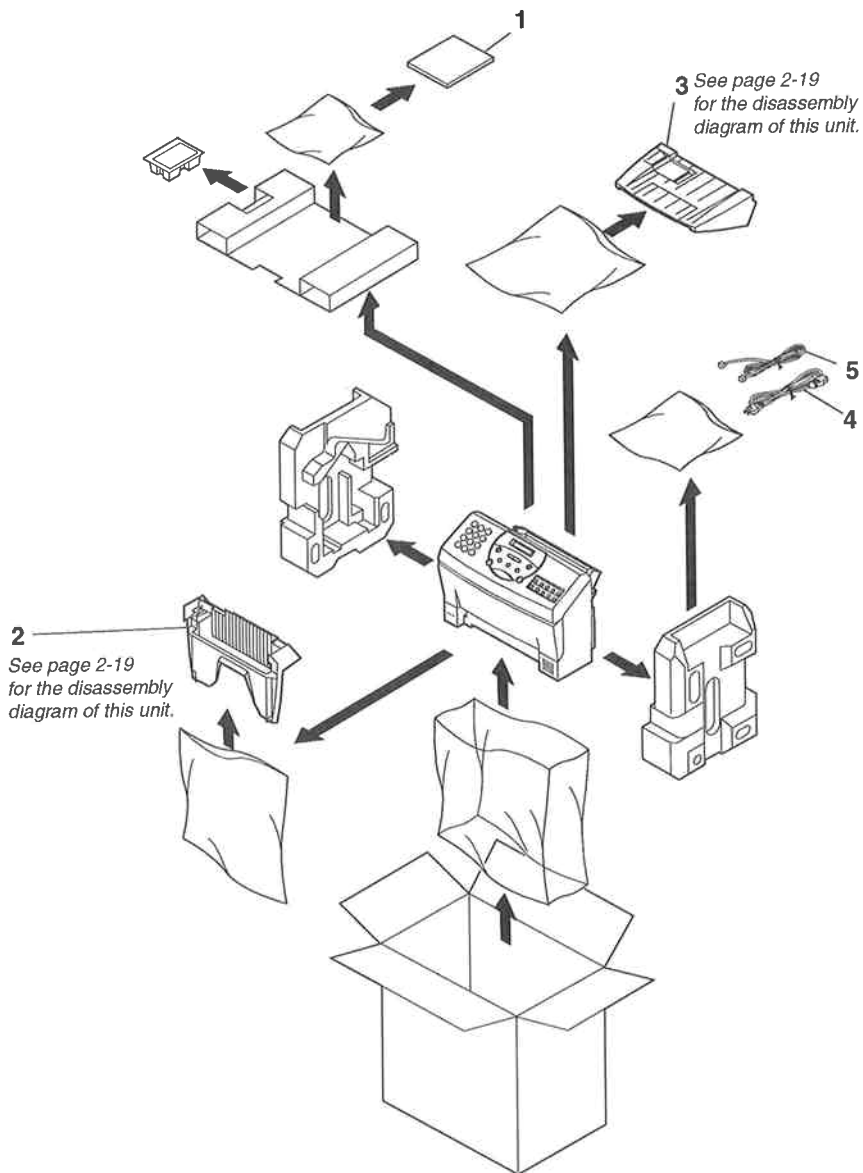


FIGURE & KEY No.	PART No.	RANK	QTY	DESCRIPTION	REMARKS
1- 1	HT1-2100-000	N	1	USER'S GUIDE (ENG)	
2	HF5-0299-000		1	PAPER TRAY	
3	HG5-1187-000		1	PAPER TRAY COVER	
4	WT3-5021-000		1	POWER SUPPLY CORD, 120V	
5	HH2-2501-000		1	MODULAR CORD, 2P	

## FIGURE 2 SCANNER UNIT & COVERS

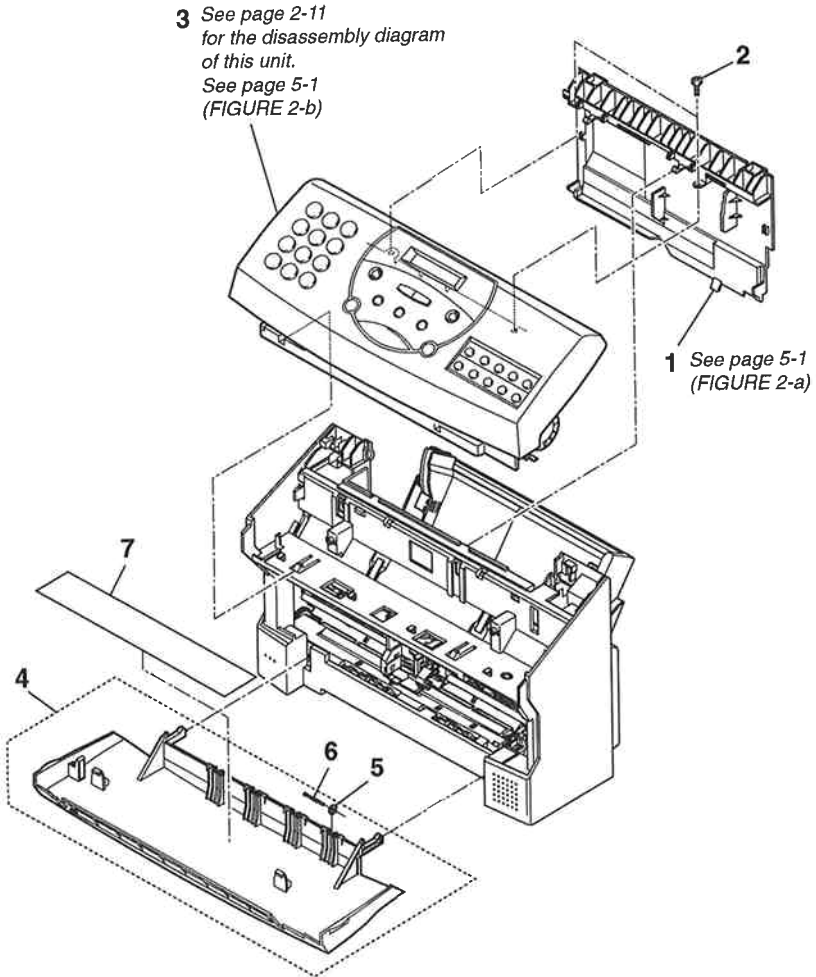


FIGURE & KEY No.	PART No.	RANK	QTY	DESCRIPTION	REMARKS
2- 1	HB1-1191-060		1	COVER, LOGIC BOARD	
2	XB4-7301-009		2	SCREW, BINDING HEAD M3X10	
3	NPN		1	SCANNER UNIT	
4	HG5-1190-000		1	FRONT COVER ASS'Y	
5	QB1-0517-000		4	SPUR	
6	QB1-0518-000		4	SPUR SHAFT	
7	HB1-1259-020		1	LABEL, CARTRIDGE	



# FIGURE 3 MAIN COVER & SPEAKER

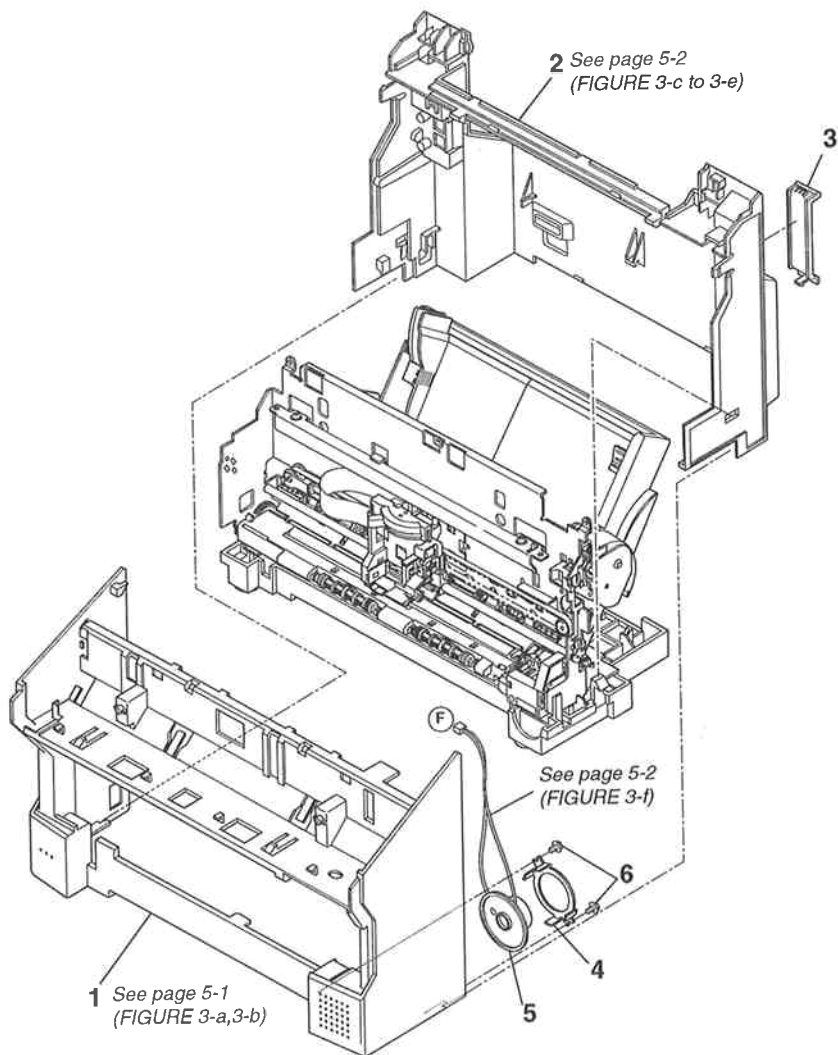


FIGURE & KEY No.	PART No.	RANK	QTY	DESCRIPTION	REMARKS
3 - 1	HB1-1285-030		1	COVER, MAIN (FRONT)	
2	HB1-1286-050		1	COVER, MAIN (REAR)	
3	HB1-1256-040		1	COVER, INTERFACE CONNECTOR	
4	HB1-1224-000	N	1	PLATE, SPEAKER MOUNTING	
5	HH7-2259-000		1	SPEAKER	
6	XB4-7300-807		2	SCREW, TAP TIGHT, BINDING HEAD	

# FIGURE 4 POWER SUPPLY UNIT & ASF & SCNT BOARD ASS'Y & NCU BOARD ASS'Y & INTCNT BOARD ASS'Y

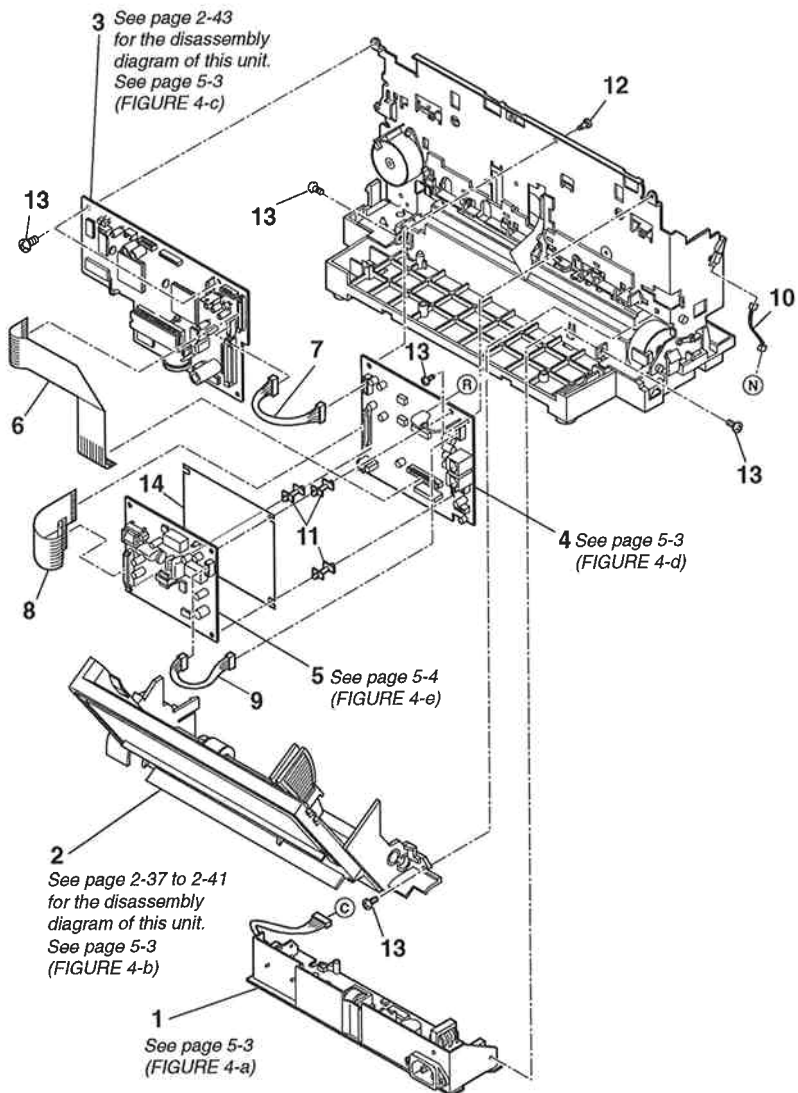


FIGURE & KEY No.	PART No.	R A N K	Q T Y	DESCRIPTION	REMARKS
4- 1	HH3-5309-000		1	POWER SUPPLY UNIT	
2	HG5-0427-030		1	AUTO SHEET FEEDER ASS'Y	
3	HG5-1192-000		1	SCNT BOARD ASS'Y	
4	HG5-1193-000		1	INTCNT BOARD ASS'Y	
5	HG5-1191-000		1	NCU BOARD ASS'Y	
6	HH2-2719-000		1	FLAT CABLE	
7	HH2-2721-000		1	CABLE WITH CONNECTOR, 7P	
8	HH2-2528-000		1	FLAT CABLE	
9	HH2-2722-000		1	CABLE WITH CONNECTOR, 5P	
10	HH2-2491-000		1	CABLE WITH CONNECTOR, 2P	
11	WT2-5415-000		3	SPACER	
12	VT2-5020-005		1	SUPPORT	
13	XB6-7300-407		7	SCREW, TP, PH M3X4	
14	HB1-2171-000		1	SHEET, INSULATION	

# FIGURE 5 PRINTER ASS'Y & INK ABSORBER & LOWER COVER UNIT

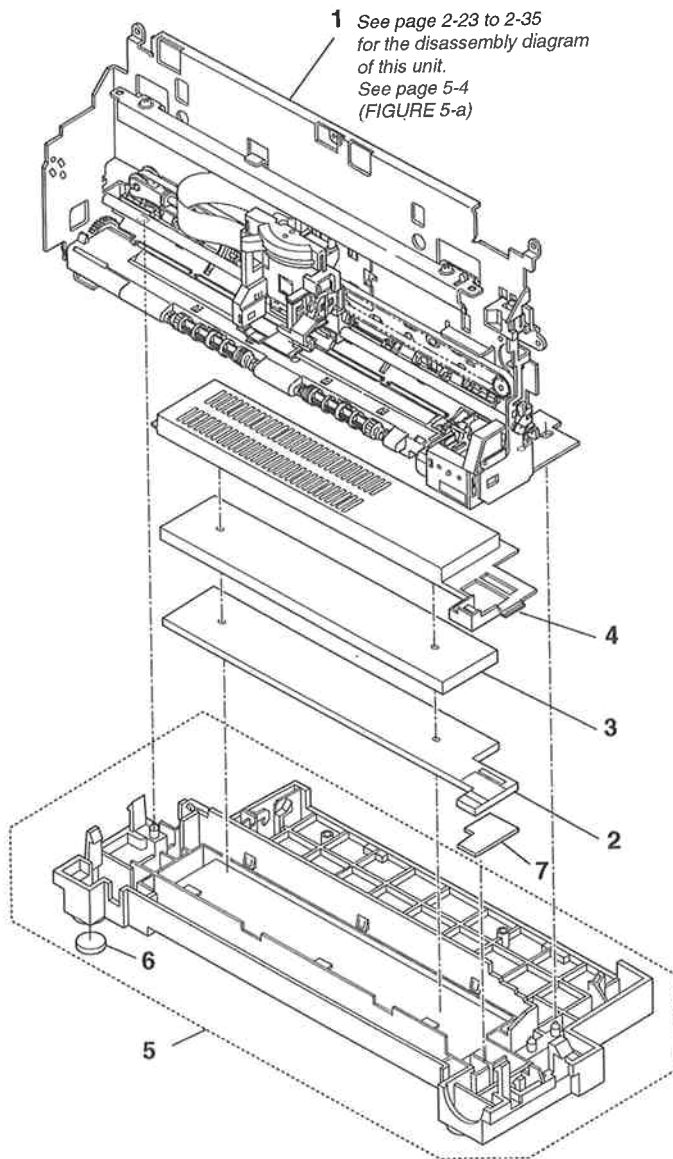
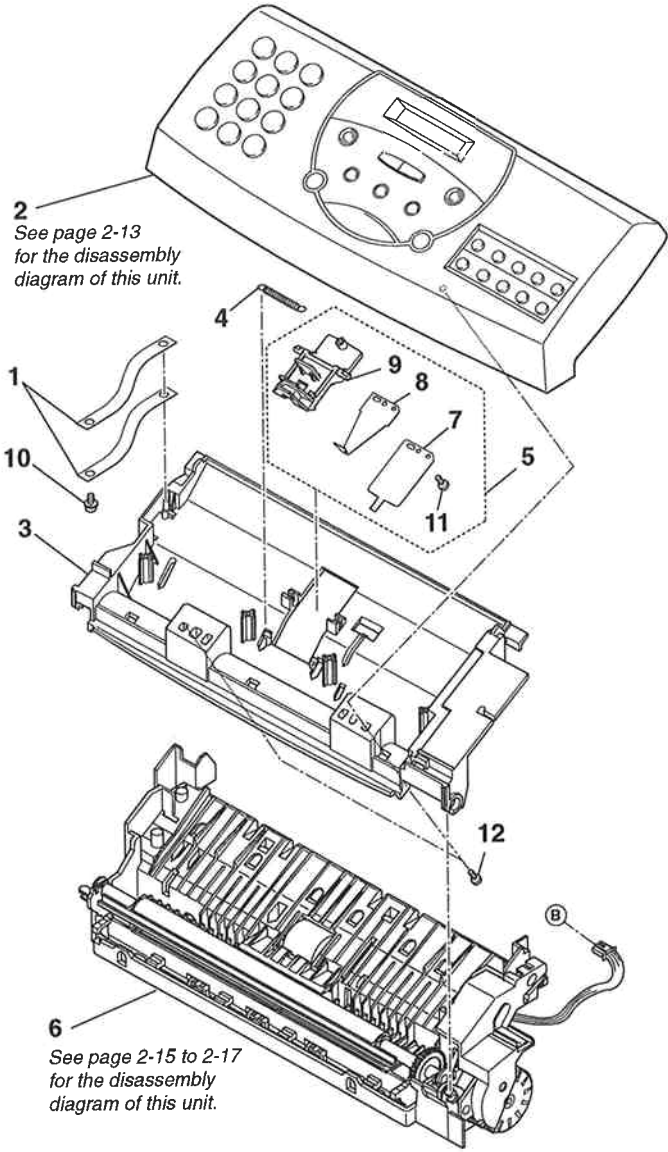


FIGURE & KEY No.	PART No.	R A N K	Q T Y	DESCRIPTION	REMARKS
5- 1	HG5-1194-000		1	PRINTER ASS'Y	
2	QB1-0509-000	N	1	ABSORBER, WASTE INK	
3	QB1-0510-000	N	1	ABSORBER, WASTE INK	
4	QB1-0508-000	N	1	COVER, WASTE INK ABSORBER	
5	HF5-0108-020		1	LOWER COVER UNIT	
6	QB1-0507-000		4	FOOT, PRINTER	
7	HB1-2193-020	N	1	ABSORBER, WASTE INK	

**FIGURE 6 OPERATION PANEL UNIT & SEPARATION  
GUIDE & SCANNER BASE UNIT**



2  
*See page 2-13  
for the disassembly  
diagram of this unit.*

6  
*See page 2-15 to 2-17  
for the disassembly  
diagram of this unit.*

FIGURE & KEY No.	PART No.	R A N K	Q T Y	DESCRIPTION	REMARKS
6 - 1	HB1-1200-000		2	BELT, STOPPER	
2	NPN		1	OPERATION PANEL UNIT	
3	HB1-1199-000		1	COVER, DOCUMENT GUIDE, UPPER	
4	HS5-2041-000		1	SPRING, COIL	
5	HG5-0771-020		1	SEPARATION GUIDE ASS'Y	
6	NPN		1	SCANNER BASE UNIT	
7	HB1-1255-000		1	SHEET, SEPARATION GUIDE	
8	HB1-1254-000		1	SPRING, LEAF, GUIDE	
9	HF5-0140-020		1	SEPARATION GUIDE UNIT	
10	XA9-0476-000		1	SCREW, TP M3X8	
11	XB4-7200-609		1	SCREW, M2X6	
12	XB4-7301-009		2	SCREW, BINDING HEAD M3X10	



**FIGURE 7 OPERATION PANEL ASS'Y**

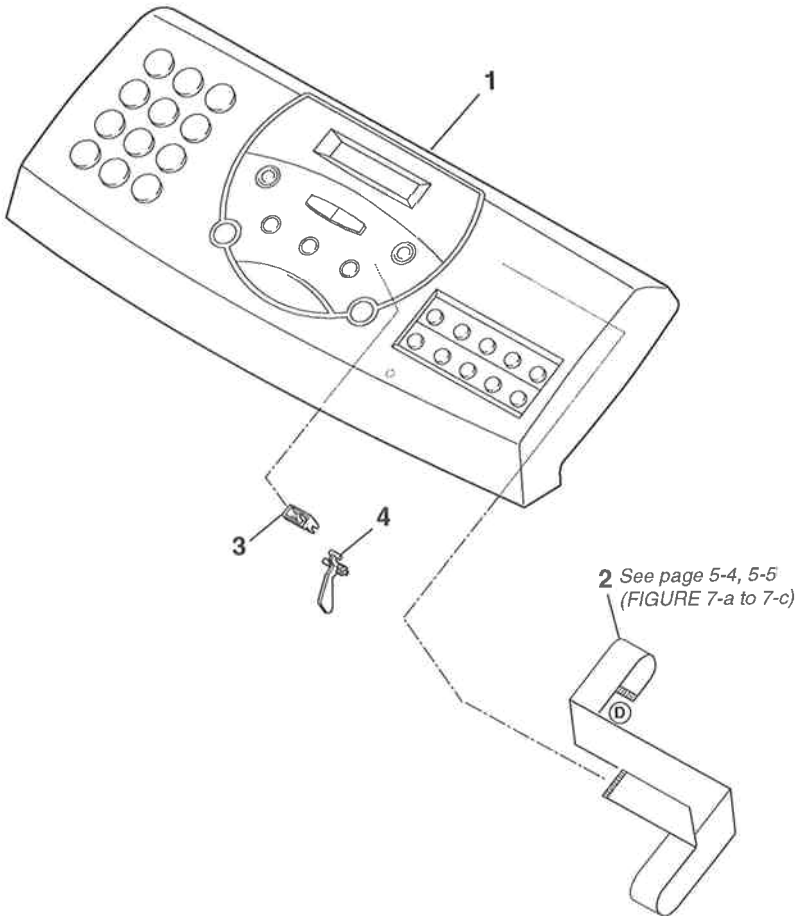


FIGURE & KEY No.	PART No.	R A N K	Q T Y	DESCRIPTION	REMARKS
7 - 1	HG5-1186-000		1	OPERATION PANEL ASS'Y (B640)	
2	HH2-2720-000		1	FLAT CABLE	
3	HB1-1198-000		1	HOLDER, DETECTION ARM	
4	HB1-1197-000		1	ARM, DETECTION (DS)	

**FIGURE 8 SEPARATION ROLLER ASS'Y  
& DOCUMENT FEED ROLLER ASS'Y**

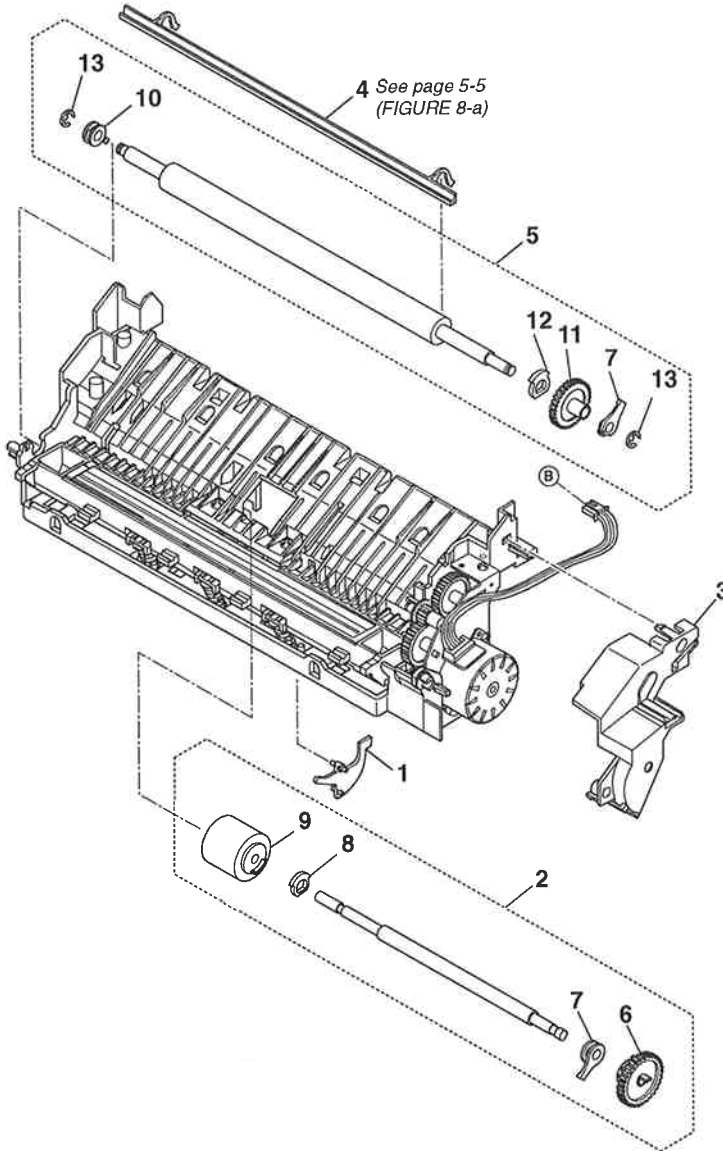


FIGURE & KEY No.	PART No.	R A N K	Q T Y	DESCRIPTION	REMARKS
8- 1	HB1-1207-000		1	ARM, DETECTION (DES)	
2	HG5-0410-030		1	SEPARATION ROLLER ASS'Y	
3	HB1-1204-000		1	COVER, SCANNER DRIVE	
4	HB1-1203-000		1	SHIELD, LIGHT	
5	HG5-0412-030		1	DOCUMENT FEED ROLLER ASS'Y	
6	HS5-0119-030		1	GEAR WITH ONEWAY CLUTCH, 39T	
7	HS5-1028-000		2	BUSHING	
8	HB1-1210-020		1	CLUTCH	
9	HB1-1464-000		1	ROLLER, SEPARATION	
10	HS5-1029-000		1	BUSHING	
11	HS5-0120-000		1	GEAR, 52T	
12	HB1-1214-000		1	CLUTCH	
13	XD2-1100-502		2	RETAINING RING (E-TYPE)	

## FIGURE 9 CONTACT SENSOR ASS'Y & SCANNER DRIVE ASS'Y

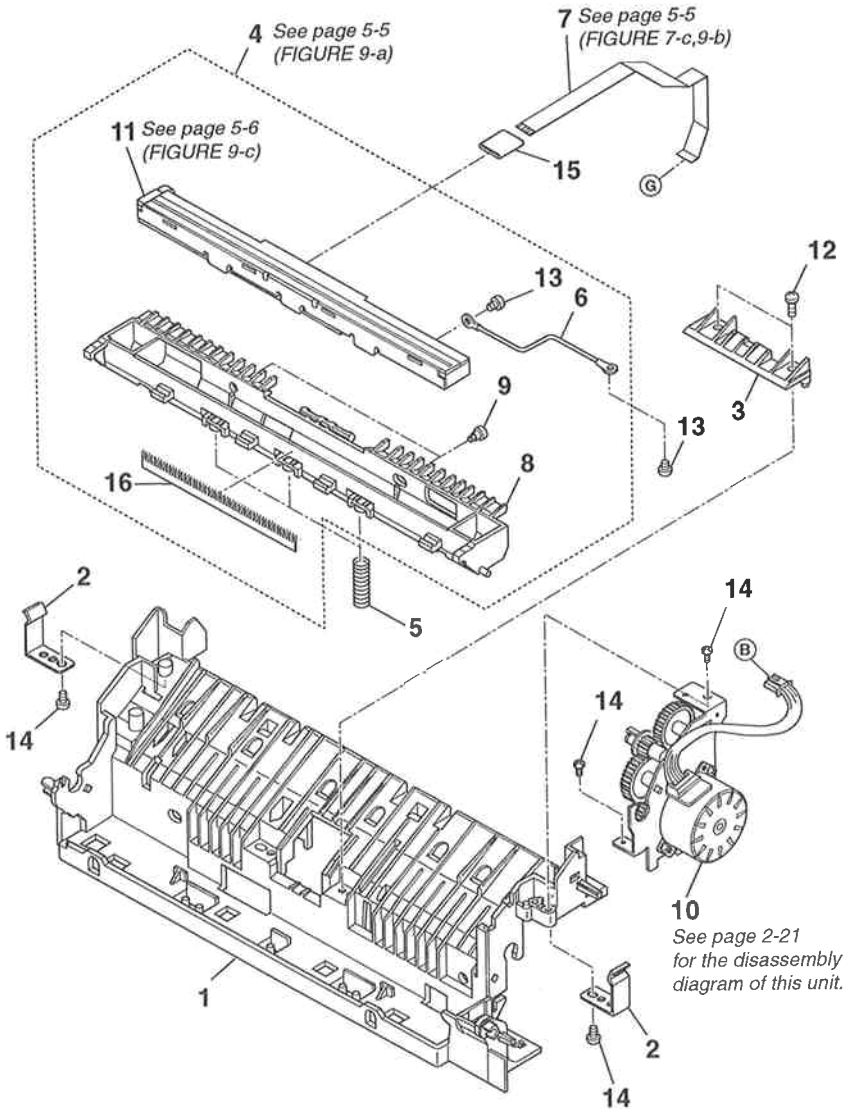
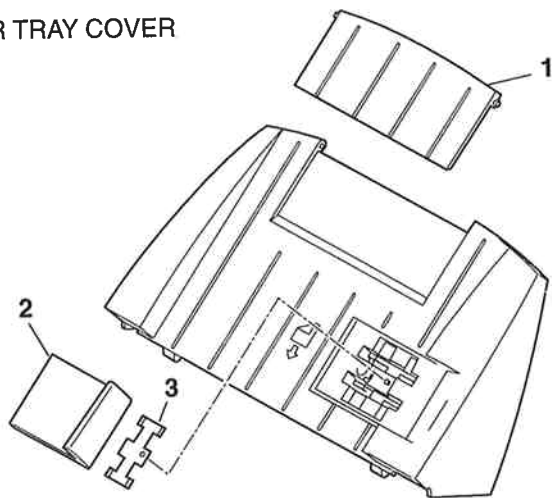


FIGURE & KEY No.	PART No.	R A N K	Q T Y	DESCRIPTION	REMARKS
9- 1	HB1-1206-060		1	COVER, DOCUMENT GUIDE, LOWER	
2	HB1-1208-000		2	SPRING, LEAF	
3	HB1-1205-000	N	1	PLATE, POSITIONING, CS HOLDER	
4	HG5-1196-000		1	CONTACT SENSOR ASS'Y	
5	HS5-2117-000		3	SPRING, COIL	
6	HH2-2494-000		1	WIRE, GROUNDING	
7	HH2-2450-000		1	FLAT CABLE	
8	HB1-1212-030		1	HOLDER, CONTACT SENSOR	
9	HS5-9005-000		2	SCREW, M2.6X3.5	
10	NPN		1	SCANNER DRIVE ASS'Y	
11	NPN		1	CONTACT SENSOR	
12	XB4-7301-009		2	SCREW, BINDING HEAD M3X10	
13	XB1-2300-407		2	SCREW, M3X4	
14	XB4-7300-807		4	SCREW, TAP TIGHT, BINDING HEAD	
15	WE8-5409-000		1	FERRITE CORE, FPC-16-20	
16	HB1-2817-000		1	ELIMINATOR, STATIC-CHARGE	

# FIGURE 10 PAPER TRAY COVER & PAPER TRAY

PAPER TRAY COVER



PAPER TRAY

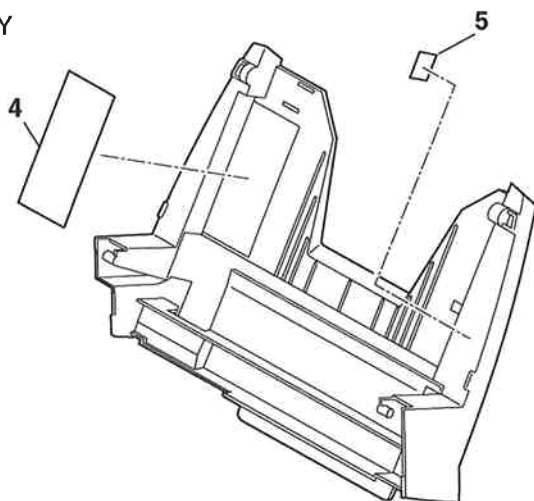


FIGURE & KEY No.	PART No.	RANK	QTY	DESCRIPTION	REMARKS
10- 1	HB1-2811-000		1	TRAY, DOCUMENT, EXTENSION	
2	HB1-2810-000		1	GUIDE, DOCUMENT	
3	HB1-2164-000		1	SPRING, LEAF	
4	HB1-1265-000		1	LABEL, PAPER LOADING	
5	HB1-0322-000		1	LABEL, UPPER LIMIT	



**FIGURE 11** DOCUMENT FEED MOTOR  
& SCANNER DRIVE GEARS

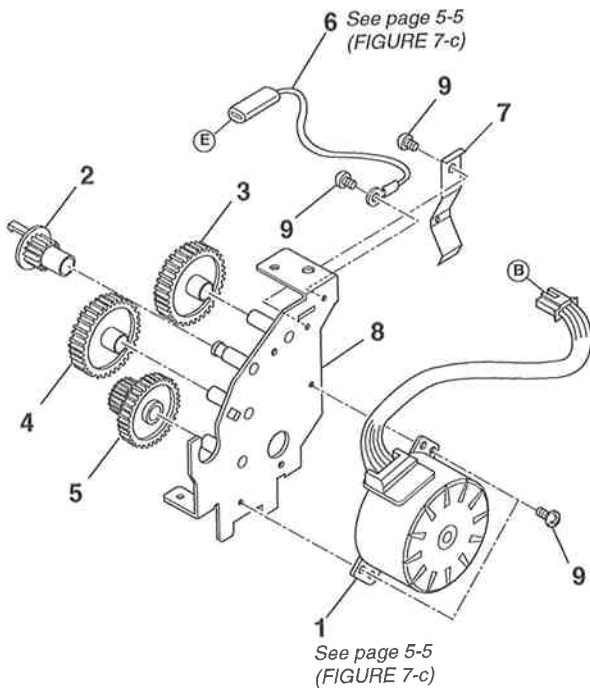


FIGURE & KEY No.	PART No.	R A N K	Q T Y	DESCRIPTION	REMARKS
11- 1	HH7-2093-000		1	PULSE MOTOR, DOCUMENT FEED	
2	HS5-0124-000		1	GEAR, 17T	
3	HS5-0122-000		1	GEAR, 51/17T	
4	HS5-0121-000		1	GEAR, 52T	
5	HS5-0123-000		1	GEAR, 50T	
6	HH2-2495-000		1	WIRE, GROUNDING	
7	HB1-1219-000		1	PLATE, GROUNDING	
8	HF5-0105-000	N	1	PLATE, SCANNER DRIVE	
9	XB1-2300-407		4	SCREW, M3X4	

**FIGURE 12 PURGE UNIT & CARRIAGE SECTION (1)**

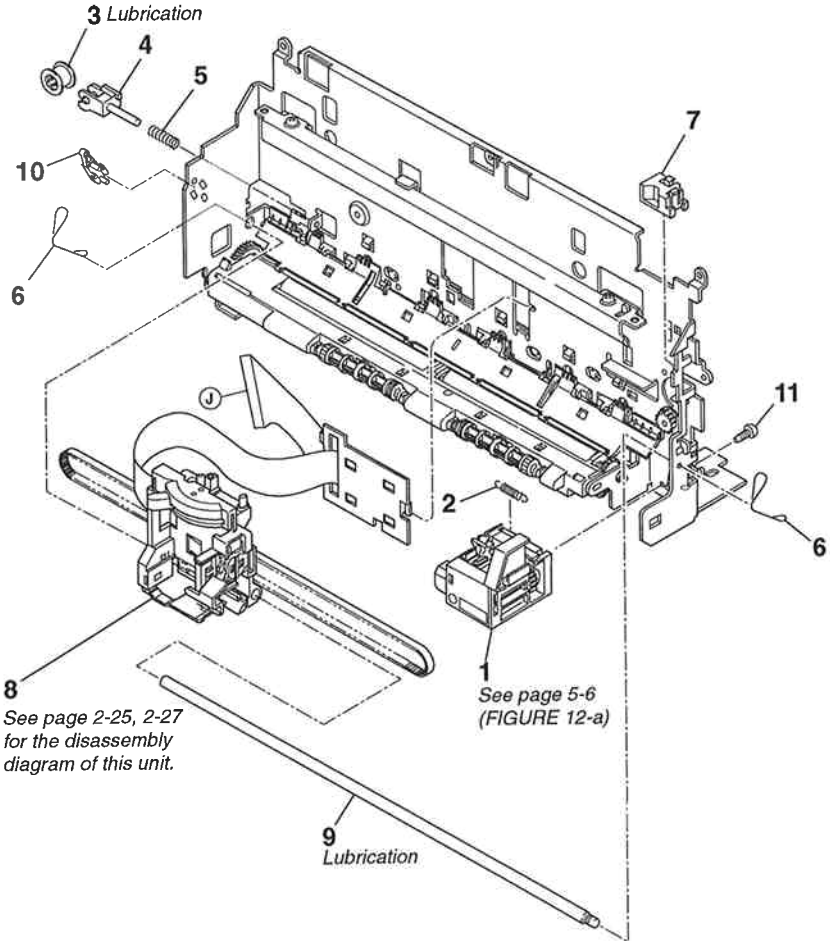


FIGURE & KEY No.	PART No.	R A N K	Q T Y	DESCRIPTION	REMARKS
12- 1	QG5-0671-000		1	PURGE UNIT	
2	QB1-0467-000		1	SPRING, HOOK END COIL	
3	QB1-0501-020		1	ROLLER, IDLER	
4	QB1-0502-020		1	BRACKET, IDLER	
5	QB1-0503-000		1	SPRING, COIL	
6	QB1-0499-000		2	CLIP, SHAFT	
7	QB1-0406-000		1	GUIDE, CORNER	
8	HG5-0422-000		1	CARRIAGE ASS'Y	
9	HB1-1232-000	N	1	SHAFT, CARRIAGE	
10	WC4-5052-000		1	MICRO SWITCH	
11	XB4-7300-609		1	SCREW, TAP, BINDING HEAD, M3X6	

## FIGURE 13 CARRIAGE SECTION (2)

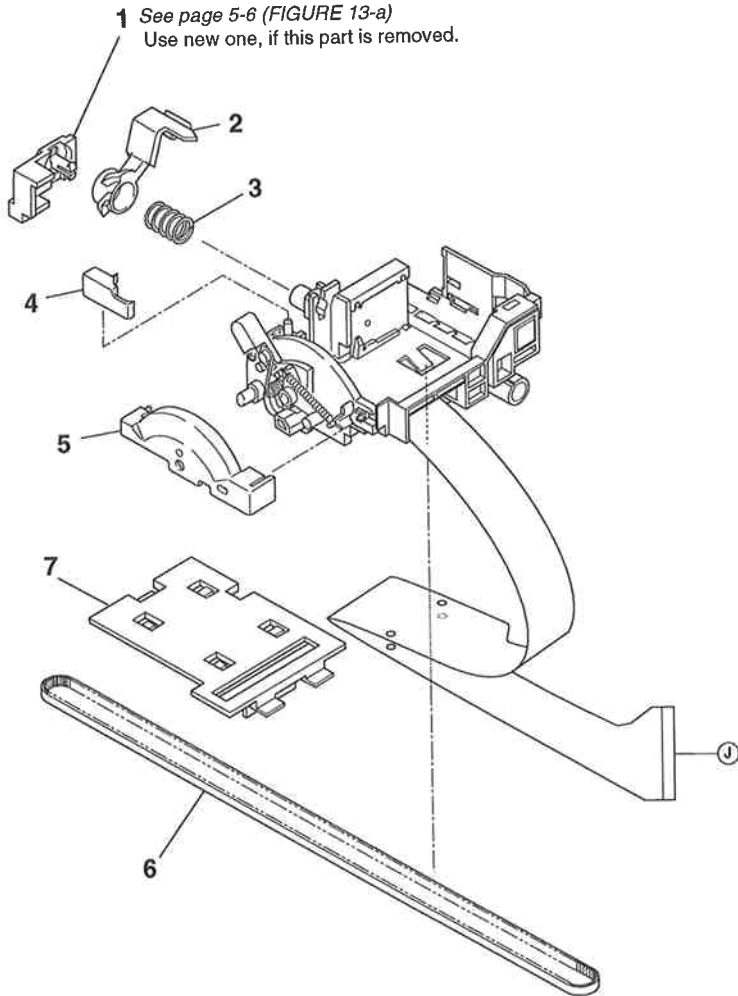


FIGURE & KEY No.	PART No.	R A N K	Q T Y	DESCRIPTION	REMARKS
13- 1	QB1-0440-020		1	COVER, HOOK	
2	HB1-1263-000		1	LEVER, HOOKING	
3	QB1-0439-000		1	SPRING, COIL	
4	QB1-0438-000		1	HOOK, CARRIAGE	
5	HB1-1237-000		1	COVER, CARRIAGE TOP	
6	QB1-0434-000		1	BELT, CARRIAGE	
7	HB1-1231-000		1	HOLDER, CARRIAGE RIBBON CABLE	

**FIGURE 14 CARRIAGE SECTION (3)**

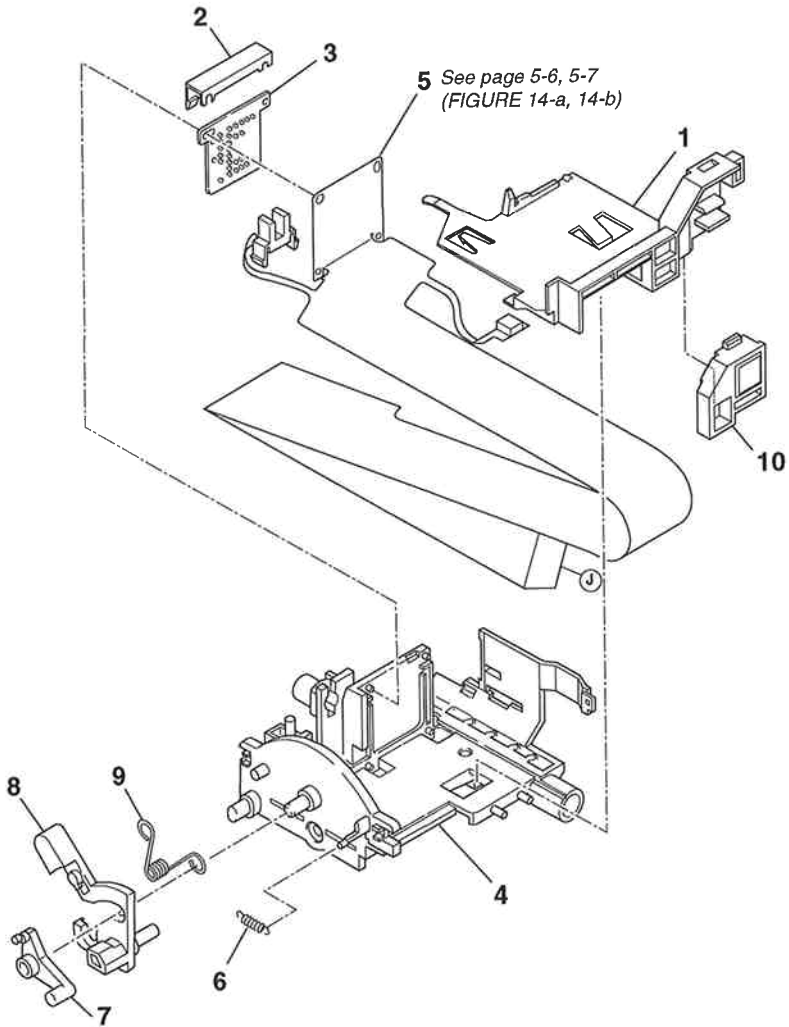


FIGURE & KEY No.	PART No.	RANK	QTY	DESCRIPTION	REMARKS
14 - 1	HB1-1236-000		1	GUIDE, RIBBON CABLE	
2	QB1-0441-000		1	HOLDER, RIBBON CABLE (UPPER)	
3	QB1-0436-000		1	PAD, CONTACT	
4	HB1-1241-000		1	BASE, CARRIAGE	
5	HG5-0423-020		1	CARRIAGE RIBBON CABLE ASS'Y	
6	QB1-0449-000		1	SPRING, HOOK END COIL	
7	HB1-1239-000		1	CAM, TENSION	
8	HB1-1238-000		1	LEVER, FORMS THICKNESS	
9	QB1-0446-000		1	SPRING, TORSION	
10	HB1-1240-000		1	PLATE, POSITIONING, INK SENSOR	



**FIGURE 15 CARRIAGE MOTOR & PAPER FEED MOTOR**

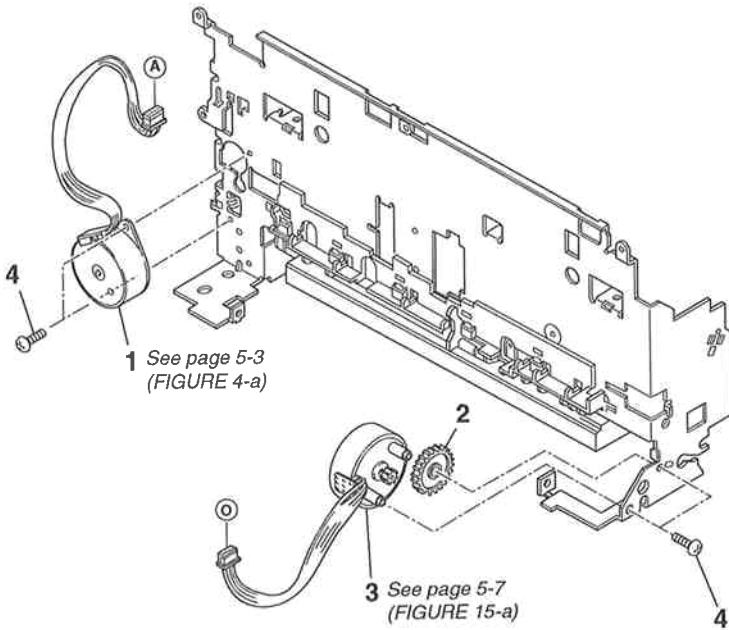


FIGURE & KEY No.	PART No.	R A N K	Q T Y	DESCRIPTION	REMARKS
15- 1	QH4-4112-000		1	MOTOR, CARRIAGE	
2	QB1-0500-000		1	GEAR, SLOW DOWN	
3	QH4-4114-000		1	MOTOR, PAPER FEED	
4	XB1-2300-407		4	SCREW, M3X4	

## FIGURE 16 PAPER FEED SECTION (1)

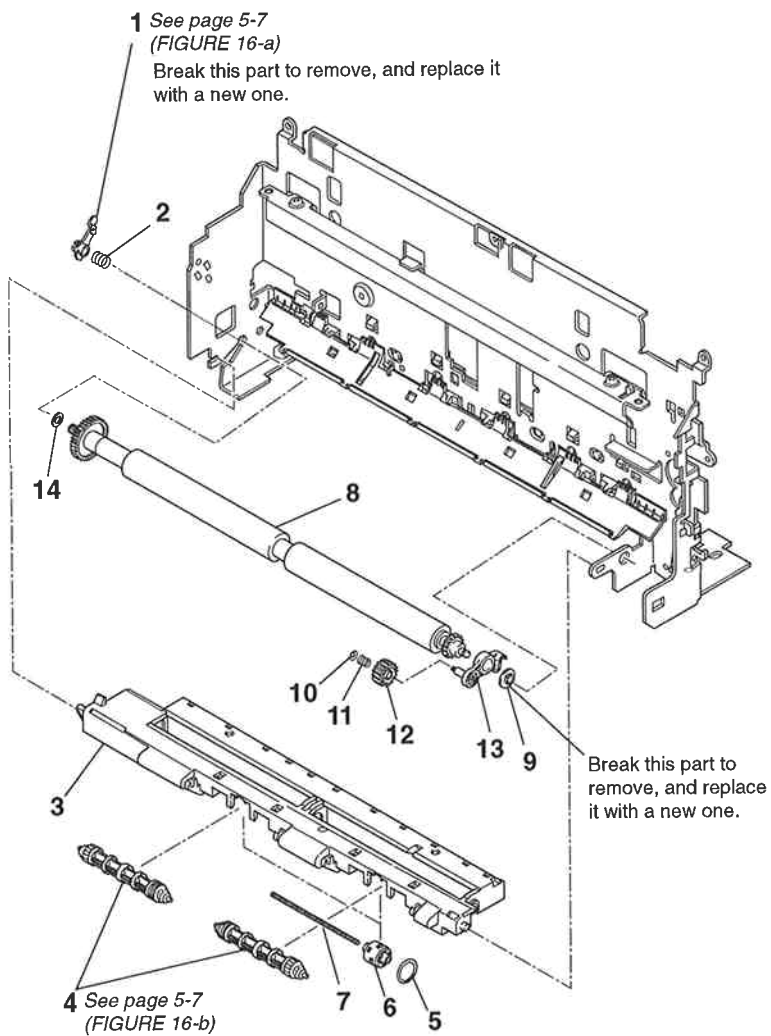


FIGURE & KEY No.	PART No.	R A N K	Q T Y	DESCRIPTION	REMARKS
16- 1	QB1-0417-000		1	BUSHING	
2	QB1-0423-000		1	SPRING, COIL	
3	HB1-1242-000		1	PLATEN	
4	HG5-0433-000		2	PAPER EJECT ROLLER ASS'Y	
5	QB1-0429-030		2	RING, RUBBER	
6	QB1-0428-000		2	ROLLER, TRANSMISSION	
7	QB1-0419-000		2	SHAFT, ROLLER	
8	HF5-0106-000		1	ROLLER, PAPER FEED	
9	QB1-0422-000		1	BUSHING	
10	XA9-0613-000		1	NUT, SUS	
11	QB1-0421-000		1	SPRING, COIL	
12	QB1-0425-000		1	GEAR, TRANSMISSION	
13	QB1-0420-000		1	ARM, TRANSMISSION	
14	QB1-0622-000		1	WASHER, PLAIN	

**FIGURE 17 PAPER FEED SECTION (2)  
& CARRIAGE GUIDE FRAME**

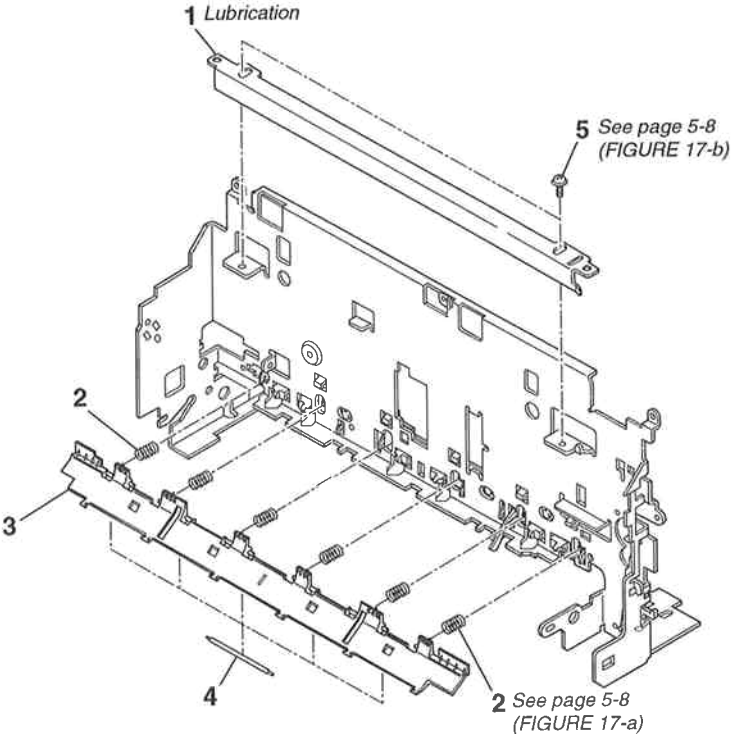


FIGURE & KEY No.	PART No.	R A N K	Q T Y	DESCRIPTION	REMARKS
17- 1	QB1-0404-000	N	1	FRAME, CARRIAGE GUIDE	
2	QB1-0410-000		6	SPRING, COIL	
3	HB1-1233-000		1	PLATE, PRESSURE	
4	QB1-0684-000		5	ROLLER, PRESSURE	
5	HS5-9003-000		2	SCREW, BH(RED) M3X4	

**FIGURE 18** PRINTER FRAME

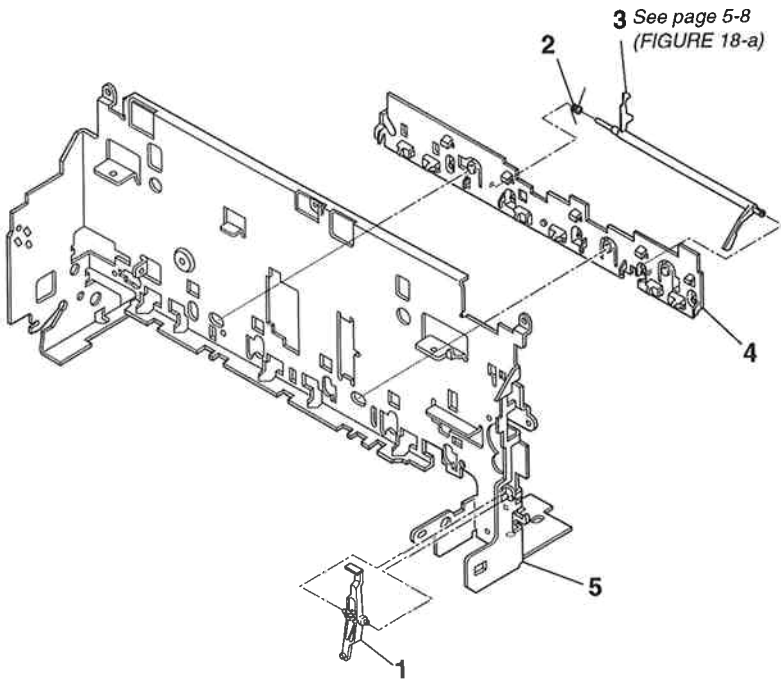
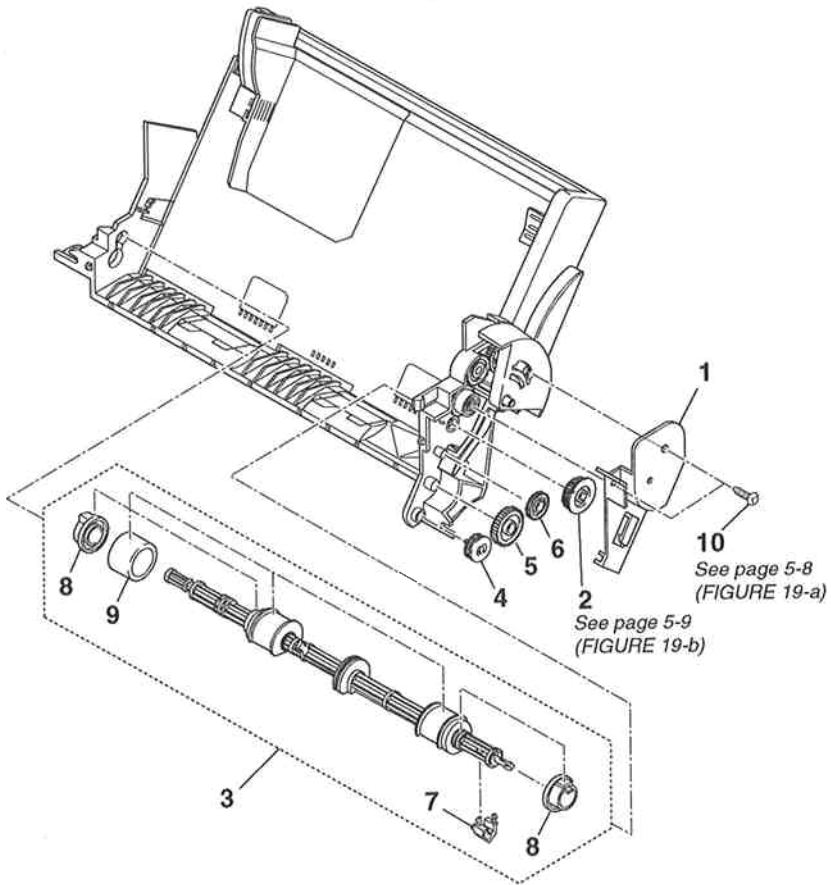


FIGURE & KEY No.	PART No.	R A N K	Q T Y	DESCRIPTION	REMARKS
18- 1	QB1-0413-000		1	ARM, SENSOR	
2	QB1-0412-000		1	SPRING, TORSION	
3	QB1-0411-000		1	ARM, PAPER SENSOR	
4	HB1-1235-000		1	GUIDE, PRESSURE PLATE	
5	HB1-1234-040	N	1	FRAME, PRINTER	



**FIGURE 19 AUTO SHEET FEEDER (1)**





**FIGURE 20 AUTO SHEET FEEDER (2)**

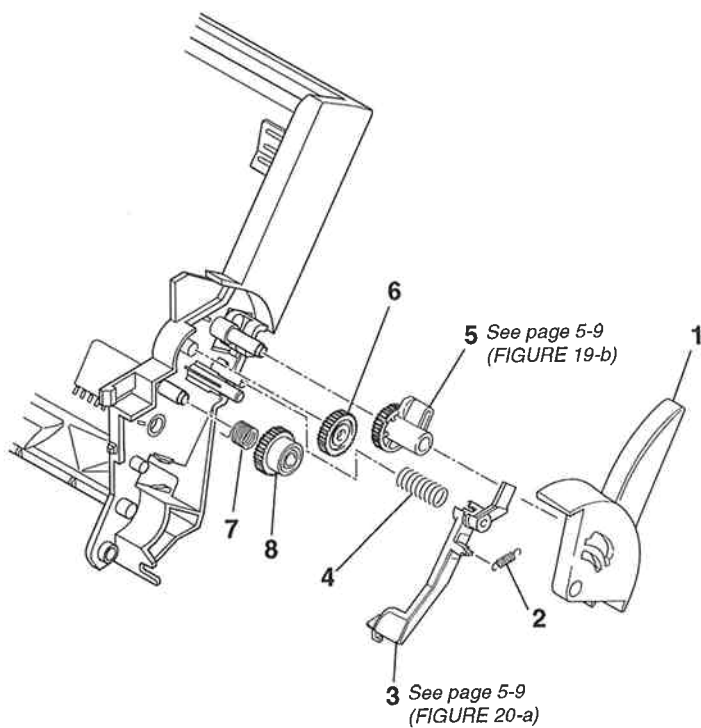
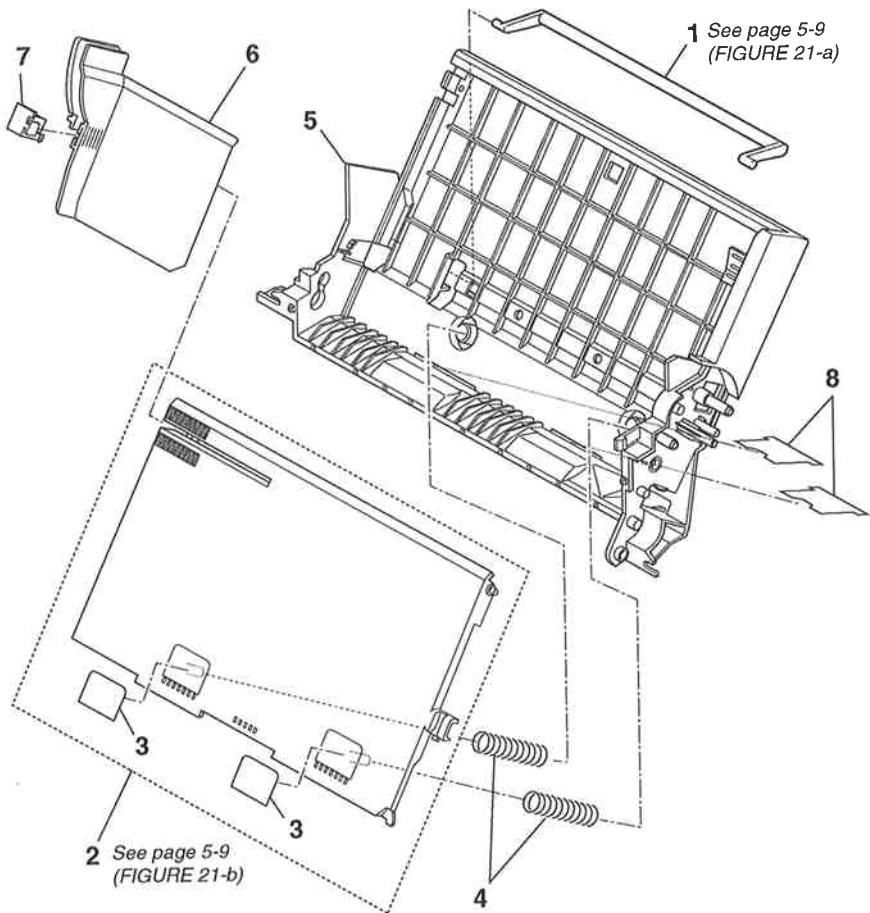


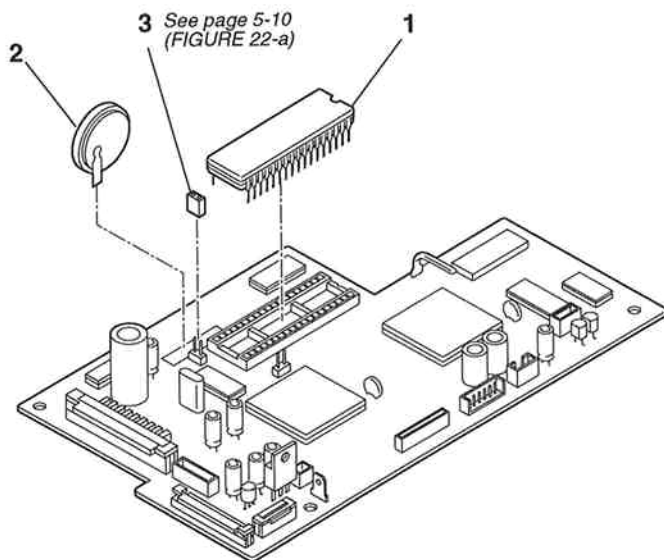
FIGURE & KEY No.	PART No.	R A N K	Q T Y	DESCRIPTION	REMARKS
20 - 1	QB1-0476-000		1	LEVER, PAPER SELECTION	
	QB1-0490-000		1	COIL, SPRING HOOK END	
	QB1-0475-000		1	ARM, CORNER	
	QB1-0489-000		1	SPRING, COIL	
	QB1-0477-000		1	GEAR, CAM	
	QB1-0484-000		1	GEAR, TRANSMISSION	
	QB1-0482-000		1	SPRING, ONE WAY CLUTCH	
	QB1-0483-000		1	GEAR, ONE WAY CLUTCH	

**FIGURE 21 AUTO SHEET FEEDER (3)**





**FIGURE 22 SCNT BOARD ASS'Y**

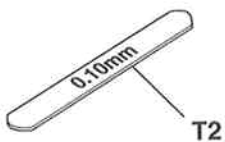
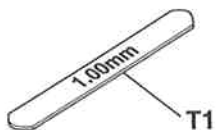






### 3. TOOL

FIGURE 23 TOOLS

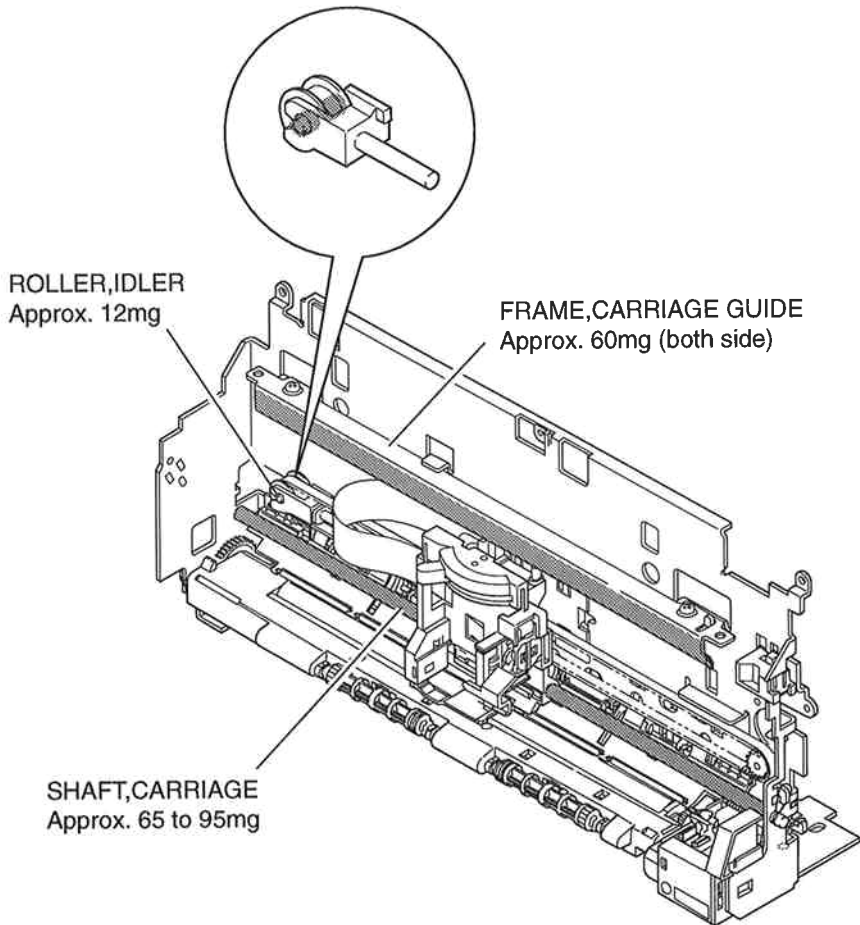




# 4. LUBRICATIONS

## 4.1 Locations

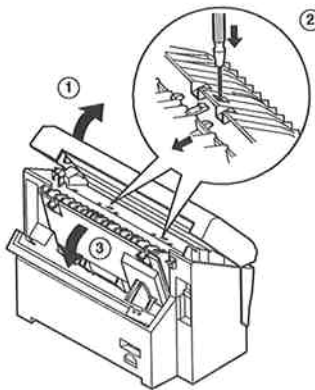
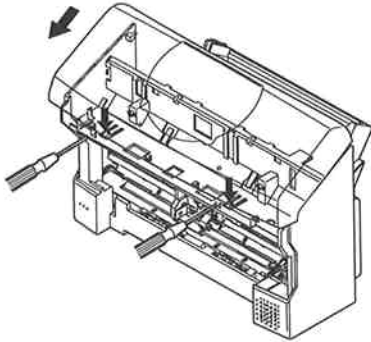
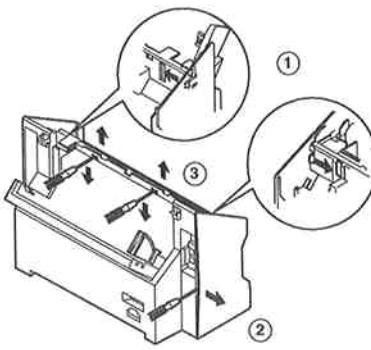
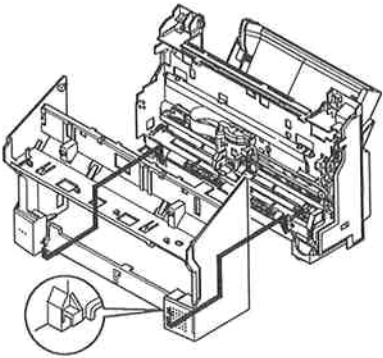
Some parts are lubricated with grease to ensure smooth operation and to increase conductivity. If lubricated parts are replaced or grease is removed, grease must be reapplied.

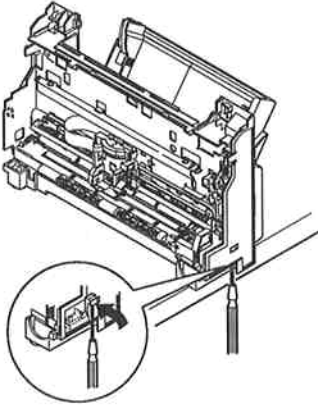


FLOIL G311S : Non-electroconductive grease

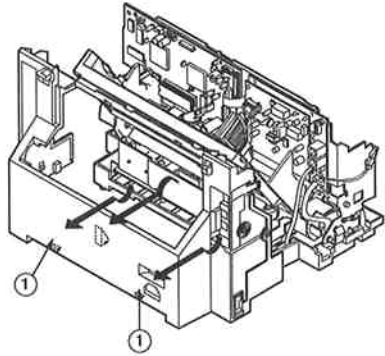
**This page intentionally left blank**

# 5. GUIDE TO REPLACEMENT

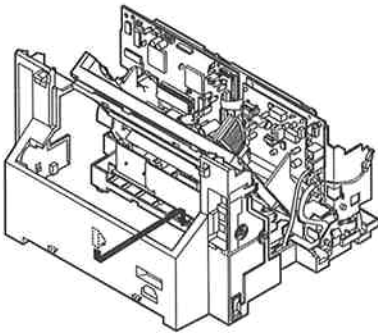
<p><b>FIGURE 2-a</b></p>	<p>See Page 2 - 3</p>	<p><b>FIGURE 2-b</b></p>	<p>See Page 2 - 3</p>
 <p>Open the scanner unit, and after removing the two screws that hold the "Cover, Logic Board" in place, insert a screwdriver, as shown at ② in the illustration above, and prise the cover free from the tabs, and remove it. Pay attention when removing the cover so as to avoid trapping the flat cable inside.</p>	 <p>When removing the SCANNER UNIT, insert a screwdriver into the holes at the right and left of the SCANNER BASE UNIT, and break the tabs. Then slide the Scanner Unit in the direction of the arrows.</p>		
<p><b>FIGURE 3-a</b></p>	<p>See Page 2 - 5</p>	<p><b>FIGURE 3-b</b></p>	<p>See Page 2 - 5</p>
 <p>When removing the COVER, MAIN (Front), ① remove the tabs at the upper right and left, and insert a screwdriver, as illustrated above ②, so that the cover is prised loose, remove the tabs at point ③, with a flat bladed screwdriver.</p>	 <p>When attaching the COVER, MAIN (Front), clip the tabs shown above on to the Lower Cover Unit.</p>		

**FIGURE 3-c**See Page  
2 - 5

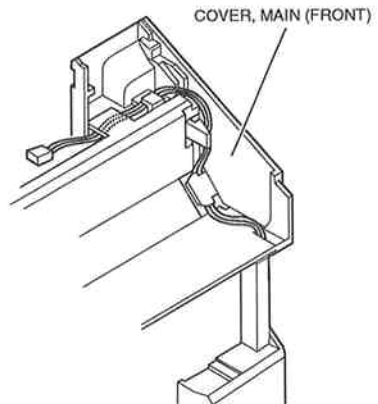
When removing the COVER, MAIN (Rear), place the machine at the edge of the work surface, and insert a screwdriver, as illustrated above, and remove the right and left tabs.

**FIGURE 3-d**See Page  
2 - 5

To remove the COVER, MAIN (Rear), insert your fingers into location ①, illustrated above, and lift up.

**FIGURE 3-e**See Page  
2 - 5

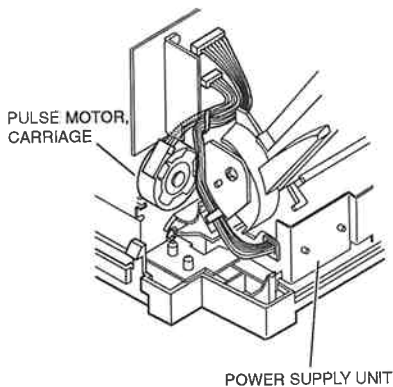
When attaching the COVER, MAIN (Rear), be careful of the tabs shown above.

**FIGURE 3-f**See Page  
2 - 5

Thread the speaker cable as shown above.

**FIGURE 4-a**

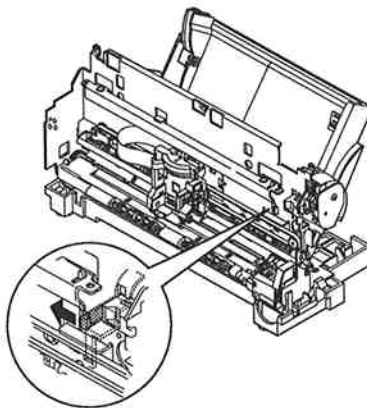
See Page  
2 - 7/29



Thread the cables for the POWER SUPPLY UNIT, and PULSE MOTOR, CARRIAGE as shown above.

**FIGURE 4-b**

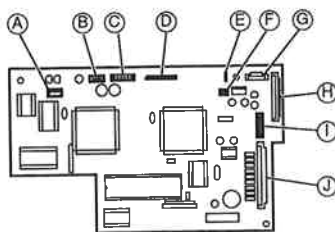
See Page  
2 - 7



When removing the AUTO SHEET FEEDER ASS'Y, release the tabs holding the printer chassis.

**FIGURE 4-c**

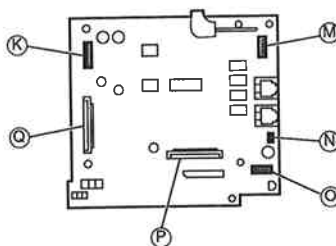
See Page  
2 - 7



SCNT board ass'y

**FIGURE 4-d**

See Page  
2 - 7

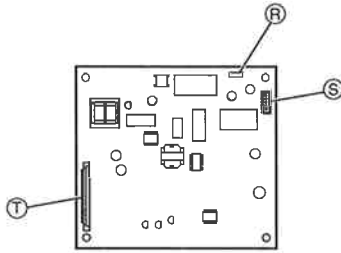


INTCNT board ass'y

Insert the connectors into the locations in the illustration above, corresponding to the alphabet letters in the illustration in Chapter 2.

**FIGURE 4-e**

See Page  
2 - 7

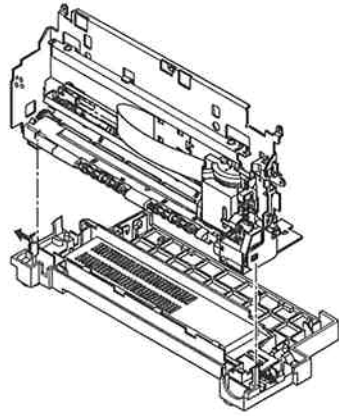


NCU board ass'y

Insert the connectors into the locations in the illustration above, corresponding to the alphabet letters in the illustration in Chapter 2.

**FIGURE 5-a**

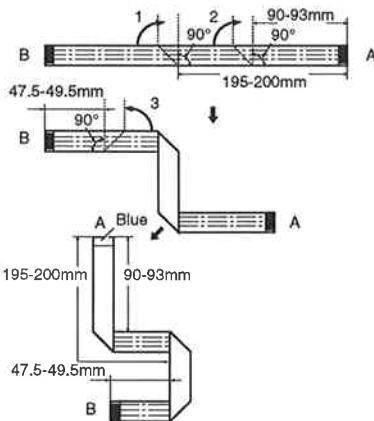
See Page  
2 - 9



When removing the PRINTER ASS'Y, release the tabs at left and right, as shown above.

**FIGURE 7-a**

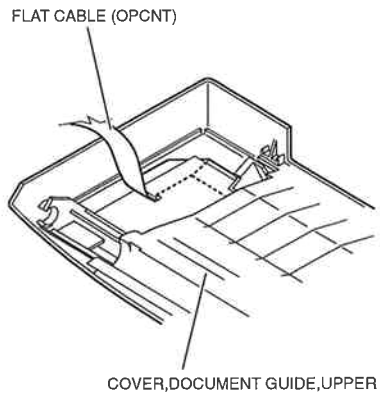
See Page  
2 - 13



Bend the FLAT CABLE (OPCNT), as shown in the diagram.

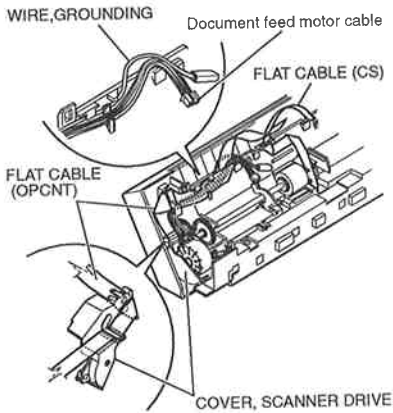
**FIGURE 7-b**

See Page  
2 - 13

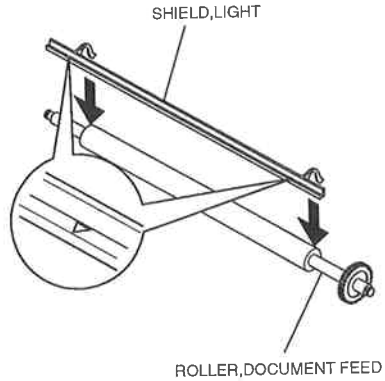


When attaching the COVER, DOCUMENT GUIDE, UPPER, feed the FLAT CABLE (OPCNT) as shown in the illustration.

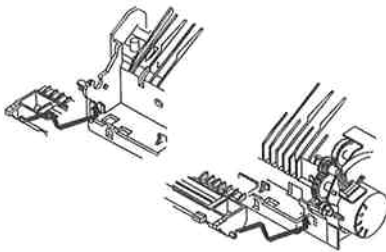


**FIGURE 7-c**See Page  
2 - 13/17/21

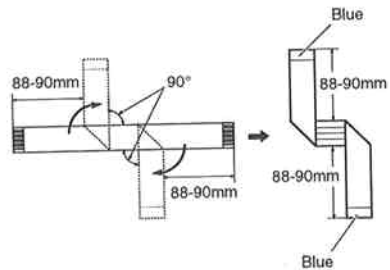
Arrange the cables of the SCANNER UNIT as shown in the illustration.

**FIGURE 8-a**See Page  
2 - 15

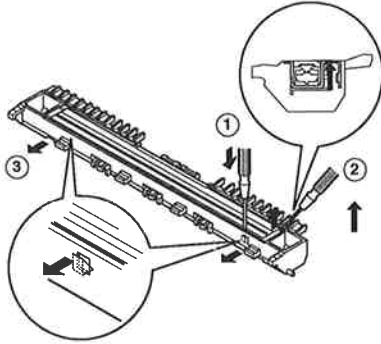
When attaching the SHIELD, LIGHT, fix so that the edge of the "▼" mark is facing the centre of the main unit.

**FIGURE 9-a**See Page  
2 - 17

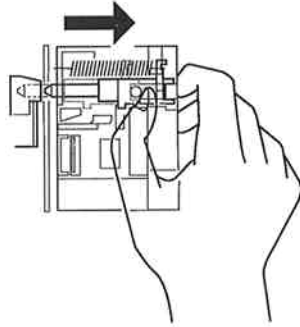
Attach the CONTACT SENSOR ASS'Y as shown in the diagram.

**FIGURE 9-b**See Page  
2 - 17

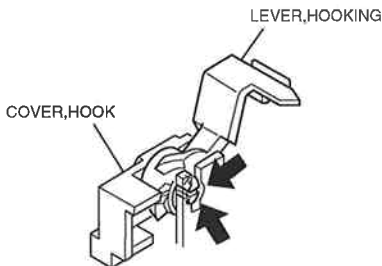
Fold the FLAT CABLE (CS) as shown in the diagram.

**FIGURE 9-c**See Page  
2 - 17

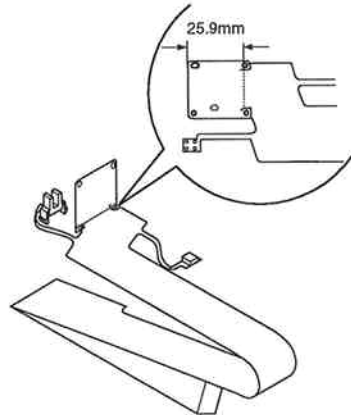
When removing the CONTACT SENSOR from the HOLDER, CONTACT SENSOR, insert a flat bladed screw driver into location ①, and lift up the metal plate section of the CONTACT SENSOR ②, as shown in the diagram. When attaching, slide the CONTACT SENSOR in location ③, and fit it in.

**FIGURE 12-a**See Page  
2 - 23

When removing the purge unit, slide the pin to the right, as shown in the diagram.

**FIGURE 13-a**See Page  
2 - 25

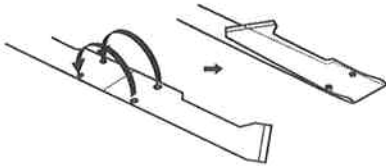
When removing the COVER, HOOK bend the tabs in the direction of the arrows.

**FIGURE 14-a**See Page  
2 - 27

Fold the CARRIAGE RIBBON CABLE ASS'Y as shown in the illustration.

**FIGURE 14-b**

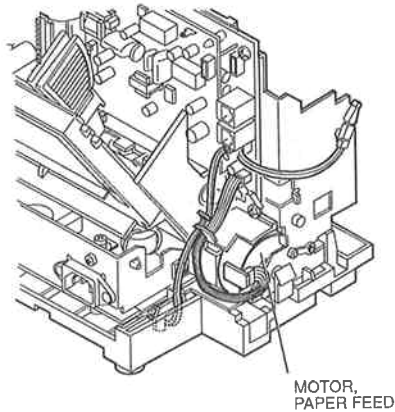
See Page  
2 - 27



Fold the CARRIAGE RIBBON CABLE ASS'Y as shown in the illustration.

**FIGURE 15-a**

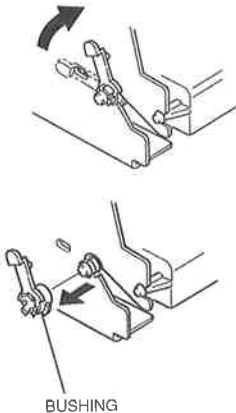
See Page  
2 - 29



Arrange the PULSE MOTOR, PAPER FEED as shown in the illustration above.

**FIGURE 16-a**

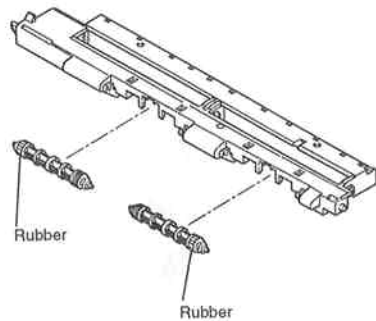
See Page  
2 - 31



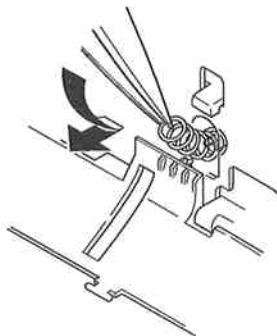
Rotate the BUSHING in the direction of the arrow, and break the tab.

**FIGURE 16-b**

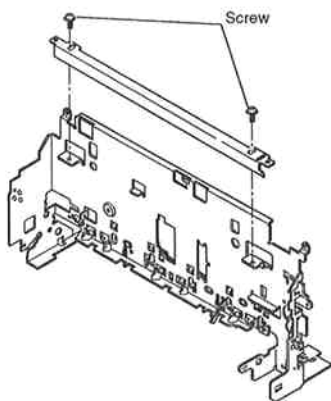
See Page  
2 - 31



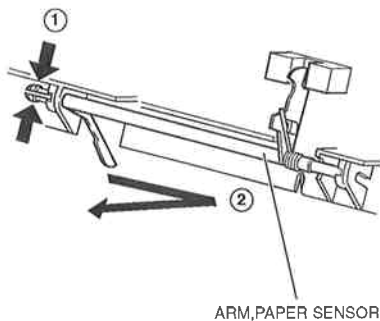
When attaching the PAPER EJECT ROLLER ASS'Y, attach as shown in the diagram, with the rubber facing outward.

**FIGURE 17-a**See Page  
2 - 33

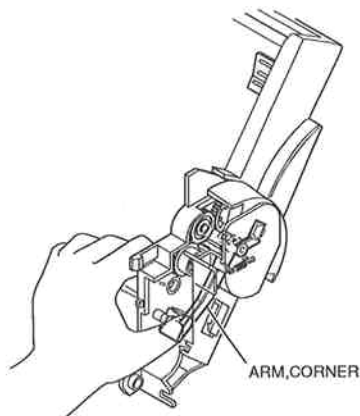
When attaching the SPRING, COIL, use tweezers to attach, as illustrated above.

**FIGURE 17-b**See Page  
2 - 33

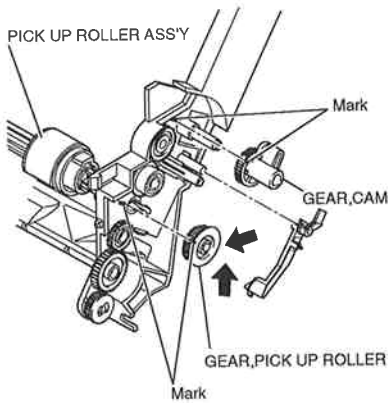
If these screws are loosened, head gap adjustment will be required.

**FIGURE 18-a**See Page  
2 - 35

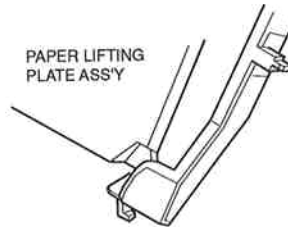
When removing the ARM, PAPER SENSOR, push in the direction of the arrow ①, and move in the direction of the arrow ②.

**FIGURE 19-a**See Page  
2 - 37

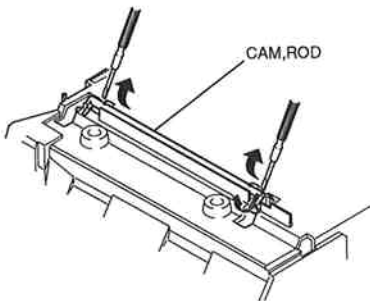
When removing the screw at Key No. 10, press down on the ARM, CORNER.

**FIGURE 19-b**See Page  
2 - 37/39

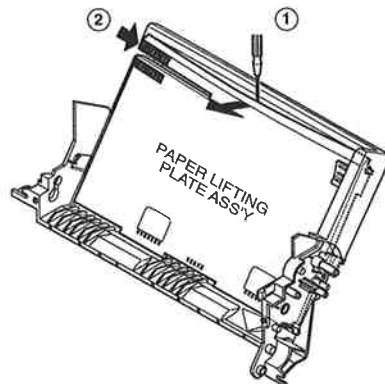
When removing the PICK UP ROLLER ASS'Y, bend the tabs in the direction of the arrows. Make sure that the GEAR, CAM and GEAR, PICKUP ROLLER are attached so that the marks line up.

**FIGURE 20-a**See Page  
2 - 39

Attach the corner arm so that the end tab is on top of the PAPER LIFTING ASS'Y.

**FIGURE 21-a**See Page  
2 - 41

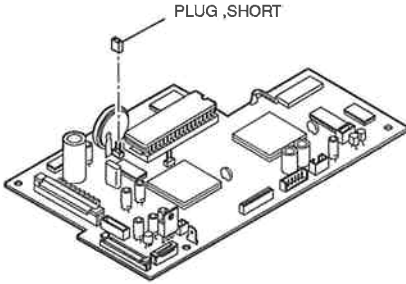
When removing the CAM, ROD, remove as shown in the diagram.

**FIGURE 21-b**See Page  
2 - 41

When removing the PAPER LIFTING PLATE ASS'Y, insert a flat bladed screwdriver into location ①, and free the boss ② from the FRAME, ASF.

**FIGURE 22-a**

See Page  
2 - 43



The SCNT BOARD ASS'Y does not have a PLUG,  
SHORT attached.

# 6. NUMERICAL INDEX

PART NUMBER	FIGURE & KEY No.	DESCRIPTION	PART NUMBER	FIGURE & KEY No.	DESCRIPTION
HB1-0322-000	10 - 5	LABEL, UPPER LIMIT	HF5-0140-020	6 - 9	SEPARATION GUIDE UNIT
HB1-1191-060	2 - 1	COVER, LOGIC BOARD	HF5-0299-000	1 - 2	PAPER TRAY
HB1-1197-000	7 - 4	ARM, DETECTION (DS)	HG5-0410-030	8 - 2	SEPARATION ROLLER ASS'Y
HB1-1198-000	7 - 3	HOLDER, DETECTION ARM	HG5-0412-030	8 - 5	DOCUMENT FEED ROLLER ASS'Y
HB1-1199-000	6 - 3	COVER, DOCUMENT GUIDE, UPPER	HG5-0422-000	12 - 8	CARRIAGE ASS'Y
HB1-1200-000	6 - 1	BELT, STOPPER	HG5-0423-020	14 - 5	CARRIAGE RIBBON CABLE ASS'Y
HB1-1203-000	8 - 4	SHIELD, LIGHT	HG5-0427-030	4 - 2	AUTO SHEET FEEDER ASS'Y
HB1-1204-000	8 - 3	COVER, SCANNER DRIVE	HG5-0432-000	19 - 3	PAPER PICKUP ROLLER ASS'Y
HB1-1205-000	9 - 3	PLATE, POSITIONING, CS HOLDER	HG5-0433-000	16 - 4	PAPER EJECT ROLLER ASS'Y
HB1-1206-060	9 - 1	COVER, DOCUMENT GUIDE, LOWER	HG5-0771-020	6 - 5	SEPARATION GUIDE ASS'Y
HB1-1207-000	8 - 1	ARM, DETECTION (DES)	HG5-1186-000	7 - 1	OPERATION PANEL ASS'Y (B640)
HB1-1208-000	9 - 2	SPRING, LEAF	HG5-1187-000	1 - 3	PAPER TRAY COVER
HB1-1210-020	8 - 8	CLUTCH	HG5-1190-000	2 - 4	FRONT COVER ASS'Y
HB1-1212-030	9 - 8	HOLDER, CONTACT SENSOR	HG5-1191-000	4 - 5	NCU BOARD ASS'Y
HB1-1214-000	8 - 12	CLUTCH	HG5-1192-000	4 - 3	SCNT BOARD ASS'Y
HB1-1219-000	11 - 7	PLATE, GROUNDING	HG5-1193-000	4 - 4	INTCNT BOARD ASS'Y
HB1-1224-000	3 - 4	PLATE, SPEAKER MOUNTING	HG5-1194-000	5 - 1	PRINTER ASS'Y
HB1-1231-000	13 - 7	HOLDER, CARRIAGE RIBBON CABLE	HG5-1196-000	9 - 4	CONTACT SENSOR ASS'Y
HB1-1232-000	12 - 9	SHAFT, CARRIAGE	HH2-2450-000	9 - 7	FLAT CABLE
HB1-1233-000	17 - 3	PLATE, PRESSURE	HH2-2491-000	4 - 10	CABLE WITH CONNECTOR, 2P
HB1-1234-040	18 - 5	FRAME, PRINTER	HH2-2494-000	9 - 6	WIRE, GROUNDING
HB1-1235-000	18 - 4	GUIDE, PRESSURE PLATE	HH2-2495-000	11 - 6	WIRE, GROUNDING
HB1-1236-000	14 - 1	GUIDE, RIBBON CABLE	HH2-2501-000	1 - 5	MODULAR CORD, 2P
HB1-1237-000	13 - 5	COVER, CARRIAGE TOP	HH2-2528-000	4 - 8	FLAT CABLE
HB1-1238-000	14 - 8	LEVER, FORMS THICKNESS	HH2-2719-000	4 - 6	FLAT CABLE
HB1-1239-000	14 - 7	CAM, TENSION	HH2-2720-000	7 - 2	FLAT CABLE
HB1-1240-000	14 - 10	PLATE, POSITIONING, INK SENSOR	HH2-2721-000	4 - 7	CABLE WITH CONNECTOR, 7P
HB1-1241-000	14 - 4	BASE, CARRIAGE	HH2-2722-000	4 - 9	CABLE WITH CONNECTOR, 5P
HB1-1242-000	16 - 3	PLATEN	HH3-5309-000	4 - 1	POWER SUPPLY UNIT
HB1-1246-070	21 - 5	FRAME, CUT SHEET FEEDER	HH4-2778-000	22 - 1	IC, UPD27C8000DZ-12, EP-ROM
HB1-1247-000	19 - 1	COVER, LEVER GUIDE	HH7-2093-000	11 - 1	PULSE MOTOR, DOCUMENT FEED
HB1-1248-050	21 - 6	GUIDE, PAPER	HH7-2259-000	3 - 5	SPEAKER
HB1-1254-000	6 - 8	SPRING, LEAF, GUIDE	HS5-0119-030	8 - 6	GEAR WITH ONEWAY CLUTCH, 39T
HB1-1255-000	6 - 7	SHEET, SEPARATION GUIDE	HS5-0120-000	8 - 11	GEAR, 52T
HB1-1256-040	3 - 3	COVER, INTERFACE CONNECTOR	HS5-0121-000	11 - 4	GEAR, 52T
HB1-1257-040	21 - 7	STOPPER, PAPER GUIDE	HS5-0122-000	11 - 3	GEAR, 51/17T
HB1-1259-020	2 - 7	LABEL, CARTRIDGE	HS5-0123-000	11 - 5	GEAR, 50T
HB1-1263-000	13 - 2	LEVER, HOOKING	HS5-0124-000	11 - 2	GEAR, 17T
HB1-1265-000	10 - 4	LABEL, PAPER LOADING	HS5-1028-000	8 - 7	BUSHING
HB1-1285-030	3 - 1	COVER, MAIN (FRONT)	HS5-1029-000	8 - 10	BUSHING
HB1-1286-050	3 - 2	COVER, MAIN (REAR)	HS5-2041-000	6 - 4	SPRING, COIL
HB1-1287-000	21 - 8	SHEET, STOPPER	HS5-2117-000	9 - 5	SPRING, COIL
HB1-1404-000	8 - 9	ROLLER, SEPARATION	HS5-9003-000	17 - 5	SCREW, BH(RED) M3X4
HB1-2164-000	10 - 3	SPRING, LEAF	HS5-9005-000	9 - 9	SCREW, M2.6X3.5
HB1-2171-000	4 - 14	SHEET, INSULATION	HT1-2100-000	1 - 1	USER'S GUIDE (ENG)
HB1-2193-020	5 - 7	ABSORBER, WASTE INK	HY9-0002-000	23 - T 1	GAUGE, GAP (1MM)
HB1-2810-000	10 - 2	GUIDE, DOCUMENT	HY9-0003-000	23 - T 2	GAUGE, GAP (0.1MM)
HB1-2811-000	10 - 1	TRAY, DOCUMENT, EXTENSION	QB1-0404-000	17 - 1	FRAME, CARRIAGE GUIDE
HB1-2817-000	9 - 16	ELIMINATOR, STATIC-CHARGE	QB1-0406-000	12 - 7	GUIDE, CORNER
HF5-0105-000	11 - 8	PLATE, SCANNER DRIVE	QB1-0410-000	17 - 2	SPRING, COIL
HF5-0106-000	16 - 8	ROLLER, PAPER FEED	QB1-0411-000	18 - 3	ARM, PAPER SENSOR
HF5-0107-000	21 - 2	PAPER LIFTING PLATE ASS'Y	QB1-0412-000	18 - 2	SPRING, TORSION
HF5-0108-020	5 - 5	LOWER COVER UNIT	QB1-0413-000	18 - 1	ARM, SENSOR

PART NUMBER	FIGURE & KEY No.	DESCRIPTION	PART NUMBER	FIGURE & KEY No.	DESCRIPTION
QB1-0417-000	16 - 1	BUSHING	VT2-5020-005	4 - 12	SUPPORT
QB1-0419-000	16 - 7	SHAFT, ROLLER	WC4-5052-000	12 - 10	MICRO SWITCH
QB1-0420-000	16 - 13	ARM, TRANSMISSION	WE8-5409-000	9 - 15	FERRITE CORE, FPC-16-20
QB1-0421-000	16 - 11	SPRING, COIL	WK1-5112-000	22 - 2	LITHIUM BATTERY, CR2450VN75N
QB1-0422-000	16 - 9	BUSHING	WS1-0172-000	22 - 3	PLUG, SHORT
QB1-0423-000	16 - 2	SPRING, COIL	WT2-5415-000	4 - 11	SPACER
QB1-0425-000	16 - 12	GEAR, TRANSMISSION	WT3-5021-000	1 - 4	POWER SUPPLY CORD, 120V
QB1-0428-000	16 - 6	ROLLER, TRANSMISSION	XA9-0476-000	6 - 10	SCREW, TP M3X8
QB1-0429-030	16 - 5	RING, RUBBER	XA9-0613-000	16 - 10	NUT, SUS
QB1-0433-000	19 - 7	PAPER, GUIDE	XB1-2300-407	9 - 13	SCREW, M3X4
QB1-0434-000	13 - 6	BELT, CARRIAGE		11 - 9	
QB1-0436-000	14 - 3	PAD, CONTACT		15 - 4	
QB1-0438-000	13 - 4	HOOK, CARRIAGE	XB4-7200-609	6 - 11	SCREW, M2X6
QB1-0439-000	13 - 3	SPRING, COIL	XB4-7300-609	12 - 11	SCREW, TAP, BINDING HEAD, M3X6
QB1-0440-020	13 - 1	COVER, HOOK	XB4-7300-807	3 - 6	SCREW, TAP TIGHT, BINDING HEAD
QB1-0441-000	14 - 2	HOLDER, RIBBON CABLE (UPPER)		9 - 14	
QB1-0446-000	14 - 9	SPRING, TORSION		19 - 10	
QB1-0449-000	14 - 6	SPRING, HOOK END COIL	XB4-7301-009	2 - 2	SCREW, BINDING HEAD M3X10
QB1-0467-000	12 - 2	SPRING, HOOK END COIL		6 - 12	
QB1-0475-000	20 - 3	ARM, CORNER		9 - 12	
QB1-0476-000	20 - 1	LEVER, PAPER SELECTION	XB6-7300-407	4 - 13	SCREW, TP, PH M3X4
QB1-0477-000	20 - 5	GEAR, CAM	XD2-1100-502	8 - 13	RETAINING RING (E-TYPE)
QB1-0478-000	19 - 2	GEAR, PICKUP ROLLER			
QB1-0479-000	19 - 6	GEAR, TRANSMISSION			
QB1-0480-000	19 - 5	GEAR, TRANSMISSION			
QB1-0482-000	20 - 7	SPRING, ONE WAY CLUTCH			
QB1-0483-000	20 - 8	GEAR, ONE WAY CLUTCH			
QB1-0484-000	20 - 6	GEAR, TRANSMISSION			
QB1-0485-000	19 - 4	GEAR, TRANSMISSION			
QB1-0487-000	21 - 1	CAM, ROD			
QB1-0489-000	20 - 4	SPRING, COIL			
QB1-0490-000	20 - 2	COIL, SPRING HOOK END			
QB1-0491-000	21 - 4	SPRING, COIL			
QB1-0493-000	21 - 3	SHEET, FRICTION			
QB1-0495-000	19 - 8	ROLLER, SLIP			
QB1-0496-000	19 - 9	RING, RUBBER, PICK-UP			
QB1-0499-000	12 - 6	CLIP, SHAFT			
QB1-0500-000	15 - 2	GEAR, SLOW DOWN			
QB1-0501-020	12 - 3	ROLLER, IDLER			
QB1-0502-020	12 - 4	BRACKET, IDLER			
QB1-0503-000	12 - 5	SPRING, COIL			
QB1-0507-000	5 - 6	FOOT, PRINTER			
QB1-0508-000	5 - 4	COVER, WASTE INK ABSORBER			
QB1-0509-000	5 - 2	ABSORBER, WASTE INK			
QB1-0510-000	5 - 3	ABSORBER, WASTE INK			
QB1-0517-000	2 - 5	SPUR			
QB1-0518-000	2 - 6	SPUR SHAFT			
QB1-0622-000	16 - 14	WASHER, PLAIN			
QB1-0684-000	17 - 4	ROLLER, PRESSURE			
QG5-0671-000	12 - 1	PURGE UNIT			
QH4-4112-000	15 - 1	MOTOR, CARRIAGE			
QH4-4114-000	15 - 3	MOTOR, PAPER FEED			
TKC-0953-000	23 - T 3	GREASE, FLOIL G311S (20GS)			



**This page intentionally left blank**





Printed on paper that  
contains 50% reused paper.

# Canon



**HY8-39AD-000**

FAXPHONE B640 PARTS CATALOG



QTY 1

\*00001\*